

TABEO-2/M/METAL-120



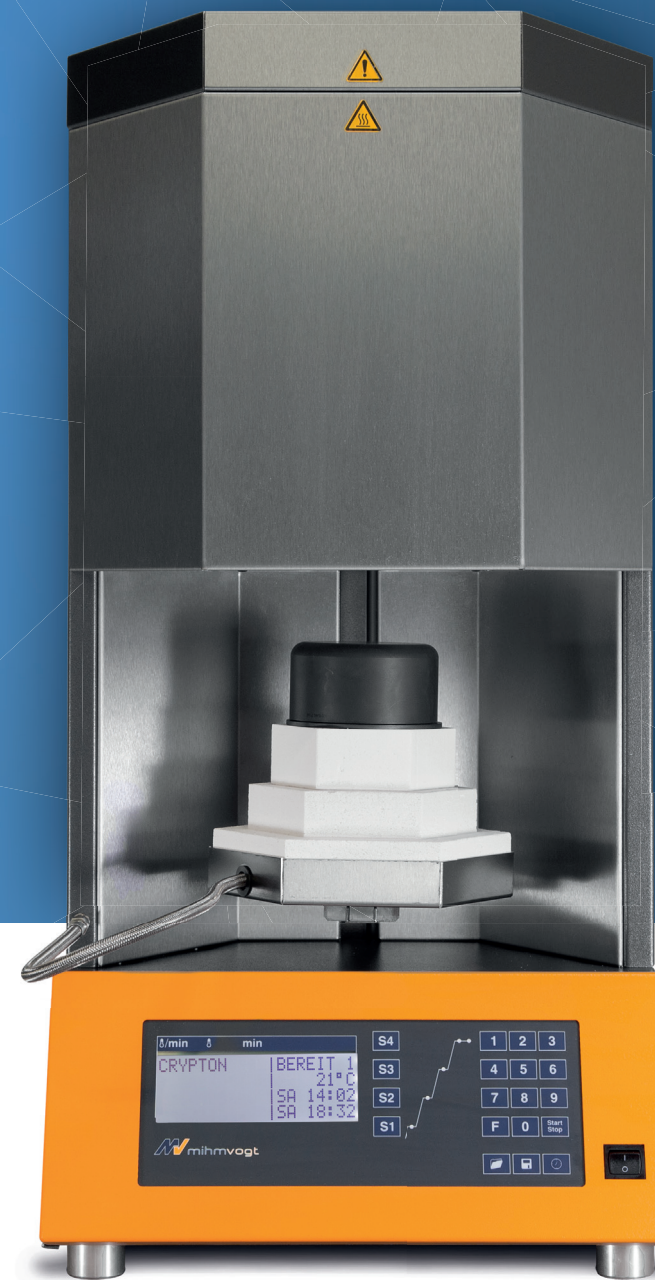
40 SINGLE CROWNS or 98 DISC

- High-quality molybdenum-disilicide heating elements
- Maximum temperature 1400°C
- Sintering system, Ø 120mm; METAL (kit)
- Program control
 - 7-segment LED
 - 4 steps
 - 9 program numbers
 - 4 fixed programs
- Shielding-gas supply with manual adjustment
- Thermocouple PtRh-Pt, type S
- Over-night programming



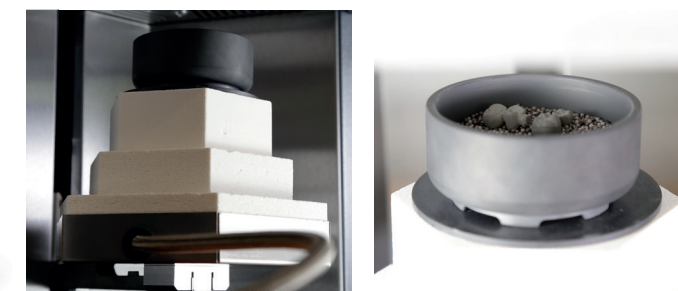
Technical Data	TABEO-2 / M / METAL-120
Power max.	1600 W
Voltage range / frequency	200–240 V; 50 / 60 Hz
Weight	80 kg
Dimensions W/D/H	530/460/680 mm

HTS-1/M/METAL-100



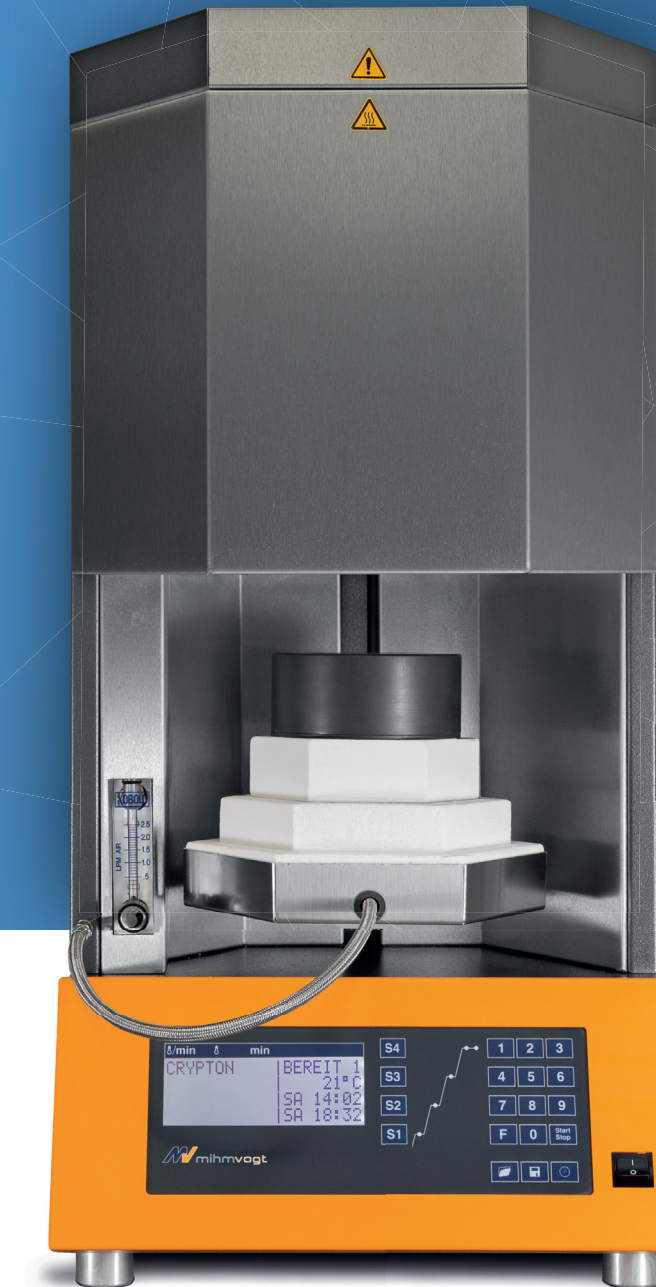
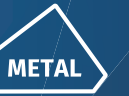
20 SINGLE CROWNS

- High-quality molybdenum-disilicide heating elements
- Maximum temperature 1400°C
- Sintering system, Ø 100mm; METAL (kit)
- Program control
 - LCD-Display
 - 4 steps
 - 30 program numbers
 - 4 fixed programs
- Shielding-gas supply system controlled
- Thermocouple PtRh-Pt, type S
- Over-night programming



Technical Data	HTS-1 / M / METAL-100
Power max.	2000 W
Voltage range / frequency	200–240 V; 50 / 60 Hz
Weight	56 kg
Dimensions W/D/H	390/500/790 mm

HTS-2/M/METAL-120



40 SINGLE CROWNS or 98 DISC

- High-quality molybdenum-disilicide heating elements
- Maximum temperature 1400°C
- Sintering system, Ø 120mm; METAL (kit)
- Program control
 - LCD-Display
 - 4 steps
 - 30 program numbers
 - 4 fixed programs
- Shielding-gas supply with manual adjustment
- Thermocouple PtRh-Pt, type S
- Over-night programming



Technical Data	HTS-2 / M / METAL-120
Power max.	2000 W
Voltage range / frequency	200–240 V; 50 / 60 Hz
Weight	56 kg
Dimensions W/D/H	390/500/790 mm

Technical Data

Details ✓ standard ✗ not compatibel



Technische Informationen		TABEO-2/M/METAL-120 9290	HTS-1/M/METAL-100 9570	HTS-2/M/METAL-120 9575
Heating system				
Scope/system size		METAL	METAL	METAL
Max. temperature	Tmax.	1400°C	1400°C	1400°C
Heating elements	type	MoSi	MoSi	MoSi
	number	4	4	4
Heating-chamber height	mm	92	57	57
Sintering system				
		1 x 120/30 mm	1 x 100/30 mm	1 x 120/30 mm
Values of process				
Max. programmable heat-up rate	K/min	40	40	40
Programm control				
7-segment LED		✓	✗	✗
4-lines LCD		✗	✓	✓
Number of process steps		4	4	4
Program numbers		9	30	30
	fixed programs	4	4	4
	Program numbers free	5	26	26
Shielding-gas				
Shielding-gas consumption/min	liter	manual configurable	1,1	manual configurable
Shielding-gas supply		manual configurable	system-controlled	manual configurable
Thermocouple				
PtRh-Pt, type S		✓	✓	✓
Special functions				
Buffering of emergency-cooling battery		✗	✗	✗
Port RS 232		✓	✓	✓
Door lift function		✗	✓	✓
Shielding-gas supply		✓	✓	✓
Over-night programming		✓	✓	✓
Technical Data				
Power max.	W	1600	2000	2000
Voltage range / frequency	V/Hz	200-240 / 50-60	200-240 / 50-60	200-240 / 50-60
Weight	kg	80	56	56
Dimensions W/D/H	mm	530/460/680	390/500/790	390/500/790

Scope of delivery

✓ standard
● optionally available
○ optionally available, but with reservations
✗ not compatible



Sintering tools		TABEO-2/M/METAL-120 9290	HTS-1/M/METAL-100 9570	HTS-2/M/METAL-120 9575
96024	Sintering beads YTZ, 1.25mm; 280g	✓	✓	✓
93551	Sintering-system kit, 100mm; METAL	○	✗	✓
7100004	Sintering-system kit, 120mm; METAL	✓	✓	✗
Accessories		TABEO-2/M/METAL-120 9290	HTS-1/M/METAL-100 9570	HTS-2/M/METAL-120 9575
96088	Crucible tongs, 100-120mm	✓	✓	✓
96030	Diamond whetstone, for sintering discs	●	●	●
7200002	Pressure reducer for argon	●	●	●
7200004	Argon supply tube, 2.5m	✓	✓	✓
96041	Power cord EU, C19; 16A	✓	✓	✓
96042	Power cord USA, C19; 16A	●	●	●
7200003	Power cord GB, C19; 13A	●	●	●



**DURABLE.
RELIABLE.
ACCURATE.**

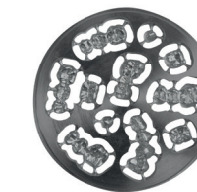


MIHM-VOGT GmbH & Co. KG
Dental-Gerätebau
Friedrich-List-Straße 8
76297 Stutensee-Blankenloch
Germany

Web www.mihm-vogt.de
Mail info@mihm-vogt.de
Phone +49 7244 70871-0
Fax +49 7244 70871-20

Status: April 2017
This document was made with maximum care.
Errors are not guaranteed.
Pictures and figures related.

METAL



Valid from 01.04.2017

MADE IN GERMANY

