

Linear guide rail

LFS-12-2



Features

- W 62 x H 31 mm
- 2 precision steel shafts Ø 12
- Anti-twist lock
- Aluminium shaft housing profile, naturally anodised
- High parallelism through patented shaft housing outline
- High guidance accuracy
- Securing from above or below using drilled holes Ø 6.5 in 100 mm raster on flat surface
- Lengths in 100 mm raster
- Max. length up to 2998 mm
- Special lengths to order
- Weight: approx. 3.3 kg/m

Ordering key

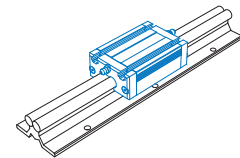
235 200 XXXX

Length in mm

e.g. **0298** = Length 298

0998 = Length 998

Profile length = Length overall L - 2 mm



Aluminium slides

- With recirculating ball guide
- Clamping surface plane milled
- Option: stainless steel version

L 94 x W 62 x H 31.5 mm (WS 4/70)

(weight: approx. 0.33 kg)

Part no.: **223104 0070**

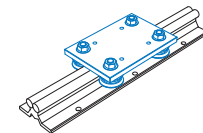
Stainless steel: **223104 1070**

L 124 x W 62 x H 31.5 mm (WS 4)

(weight: approx. 0.46 kg)

Part no.: **223104**

Stainless steel: **223104 1000**



Trolley LW 3

• L 125 x W 85 x H 7.7 mm

• Ground steel plate

• Weight: 0.93 kg

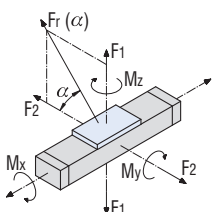
Part no.: **223008**

Load data

Shaft slides WS 4/70	
C ₀	3003 N
C	1873 N
F ₁ static	2821 N
F ₁ dynamic	1599 N
F ₂ static	3303 N
F ₂ dynamic	1873 N
M _x static	29.8 Nm
M _y static	105.3 Nm
M _z static	123.3 Nm
M _x dynamic	16.8 Nm
M _y dynamic	59.7 Nm
M _z dynamic	69.9 Nm

Shaft slides WS 4	
C ₀	4868 N
C	2426 N
F ₁ static	4157 N
F ₁ dynamic	2071 N
F ₂ static	4868 N
F ₂ dynamic	2426 N
M _x static	43.9 Nm
M _y static	155.2 Nm
M _z static	181.7 Nm
M _x dynamic	21.8 Nm
M _y dynamic	77.3 Nm
M _z dynamic	90.5 Nm

Trolley LW 3	
C ₀	2160 N
C	4000 N
F ₁ static	4320 N
F ₁ dynamic	3846 N
F ₂ static	2160 N
F ₂ dynamic	4000 N
M _x static	109.5 Nm
M _y static	194.4 Nm
M _z static	97.2 Nm
M _x dynamic	97.4 Nm
M _y dynamic	173.0 Nm
M _z dynamic	180.0 Nm



$$Fr(\alpha) = \frac{F_2}{\cos \alpha}$$

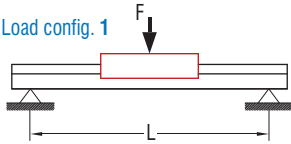
$$Fr(\alpha) = \frac{F_1}{\sin \alpha}$$

Linear guide rail

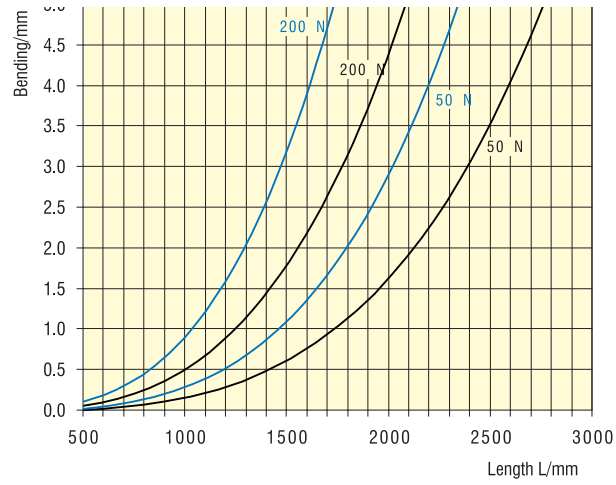
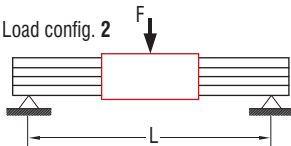
LFS-12-2

Bending

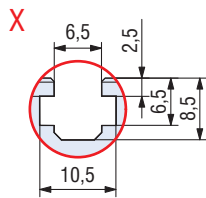
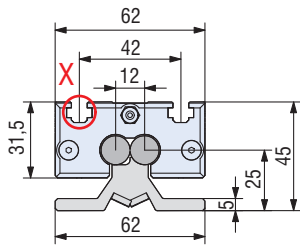
■ Load config. 1



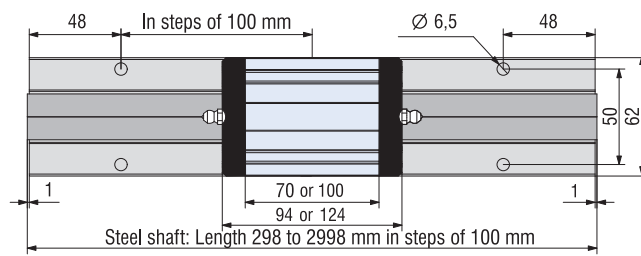
■ Load config. 2



Dimensioned drawings



LFS-12-2 with aluminium slides WS 4/70 or WS 4



LFS-12-2 with trolley LW3

