



BALL SCREW SPINDLE DRIVES with SERVO/STEPPER MOTOR and COUPLING FLANGE

Ball screws drives are used to convert a rotary motion into a linear motion. They are characterized by a high degree of excellent repeatability and a low mechanical wear. The drives are made of rolled, hardened and polished ball screws such as cured and ground ball screw nuts with internal ball return, wiper and grease nipple.

Ball screws spindle and ball screw Nuts can be adjusted and changed randomly.

The servo or stepper motors are conected with a clutch and bearing flange to the ball screw spindle and are supplied as a complete drive unit.

Features:

- 4 different motor sizes available with different flange size 40, 60, 86 and 110; for stepper and servomotors with motor controller
- Clutch and bearing flange with backlash-free coupling between motor and ball screw spindle
- Backlash-free and adjustable Ball screw Drive and Nut with mounting and clamping block
- Ball screw spindle rolled, hardened and polished (ISO 7) repeatability > 0,01 / 300 mm length

Options:

- Tolerance class
- Motor brake
- Absolute encoder
- Stepper and servo motor
- Controller for Stepper and servo motor
- Motor and encoder cable
- Linear guidance and units
- Spindle Ø 32 mm

Stepper and servo motor with coupling flange

Wiper for ball nut

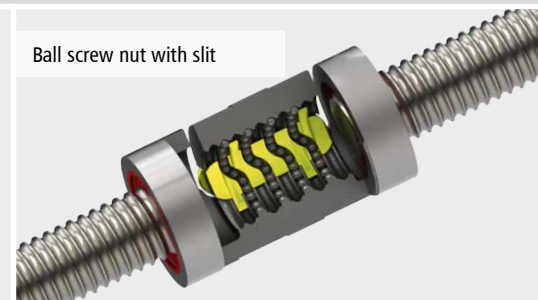
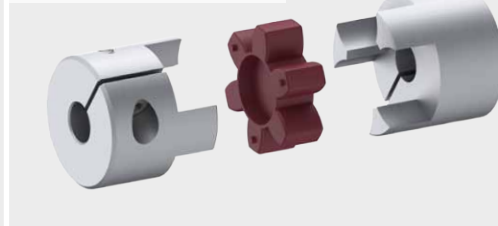
Adjustment screw for ball circulating



Bearing flange for ball screw spindle

Coupling with gear ring

Ball screw nut with slit



...for best quality and price...

BALL SCREW SPINDLE DRIVES

with ball screw spindle for Ø 12, 16, 20 and 25 mm

BS-Spindle [mm]	Pitch [mm]	Length [mm]	KG-Nut [mm]	Coupling [mm]	Coupling flange [mm]	Motor type
Ø 12	2,5 / 5	bis 1.500	Ø 24 x L 38	L 30 x Ø 20	L 45x B 44 x H 43	Stepper / Servo
Ø 16	5 / 10	bis 2.000	Ø 28 x L 50	L 40 x Ø 30	L 65 x B 61 x H 62	Stepper / Servo
Ø 20	5 / 10	bis 2.500	Ø 33 x L 50	L 60 x Ø 40	L 85 x B 90 x H 89	Stepper / Servo
Ø 25	5 / 10	bis 3.000	Ø 38 x L 50	L 78 x Ø 55	L 125 x B 112 x H 113	Stepper / Servo



Technical specifications subject to change. 61020930-01_Kugelschraubendriehbe

