

series 200
ASD 200 MD/HD TH



LASER FUMES



DUST AND SMOKE



SOLDERING FUMES



ODORS, GASES, AND VAPORS



CLEANING INDUSTRIAL GASES



NEW EMISSIONS



WELDING FUMES



OIL AND EMULSION MISTS



COMPLETE SOLUTIONS

Date of issue: 04/2014





DUST AND SMOKE

Use and application

The **ASD 200 MD/HD TH** is suitable for collecting and filtering dry and non-combustible types of dust contained in non-explosive air mixtures. Any emitted and partially unhealthy **types of dust** ought to be extracted by collecting elements directly at their place of origin and can be filtered by the ASD 200 MD/HD TH. The material of the filter elements ensures effective filtering out of the various dust particle sizes. The different filter elements can be changed separately extending the lifetime of the main filter element. The main filter element guarantees a separation efficiency of 99,95 %.

Examples

- engraving
- polishing
- grinding
- restoration / cleaning of artworks

ULT 200 mobile extraction and filtration unit

- mobile unit with castors
- pre-dust pocket filter with large volume
- control panel on the front side
- easy filter handling, modular system
- robust steel housing
- powder coated
 - vacuum module RAL 7001 silver grey
 - filter module RAL 7035 light grey



Filter system:

Storage filter system

Filters which are replaced once they are saturated.

Filter technology:

Main filter module TH

- (1) Pocket filter F9
filter class: F9 fine dust filter according to DIN EN 779
- (2) Filter mat M5
filter class: M5 medium dust filter according to DIN EN 779
- (3) Particle filter cassette H13
filter class: H13 HEPA-filter according to DIN EN 1822

Configuration

Air flow controller: suction power is continuously adjustable

Loaded particle filter indicator: visualization of the particle filter condition

Interface SUB D9: standard configuration: remote ON/OFF, operation status, filter saturation 100%

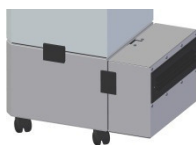




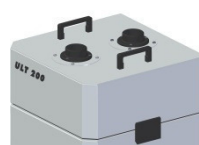
ASD 0200.0-aa.bb.cc.3003

Parameter	unit	-MD.14.11	-HD.10.10	-HD.12.11
Max. air flow	m ³ / hr	635	210	220
Max. vacuum	Pa	3.200	20.700	22.000
Nominal capacity	m ³ /hr / Pa	250 / 2.000	120 / 13.000	120 / 12.000
Motor-nominal power	kW	0,36	1,20	1,30
Nominal voltage	V	1~ 230	1~ 230	1~ 230
Nominal current	A	4	6	11
Frequency	Hz	50/60	50	50/60
Protection class	IP	54	54	54
Type blower		EC-blower	coll. turbine	EC-turbine
Noise level (at 50 - 100%)	dB(A)	52 - 57	63 - 70	63 - 70
With sound absorber (at 50- 100%)	dB(A)	50 - 54	60 - 67	60 - 66
Air flow controller		yes	yes	yes
Loaded particle filter indicator	optical	yes	yes	yes
SUB D9 interface		yes	option	yes
Air intake	Ø	ALSIDENT S50 mm; optional: further Ø; number max. 2x		
	position	optional on top or at the backside of the unit		
Air outlet		air exhaust louver, optional Ø 100 mm exhaust nozzle		
	position	lower part of the backside		
Width	mm	390		
Depth	mm	400		
Height	mm	1020		
Weight	kgs	ca. 45		
Length of power cable	m	3,0		
Filter system	HFM TH	Main filter module		
		filter system: storage filter		
	(1)	Pocket filter F9	ULT 02.0.554	
	(2)	Filter mat M5	ULT 02.0.552	
(3)	Particle filter cassette H13	ULT 02.0.516		
Options:				
sound absorber	(1*)	changed depth: 550 mm		
exhaust air connection	(2*)	1 x Ø 100 mm		
without additional intake module	(3*)	topside hose connection: Ø50mm; optional further Ø		
without additional intake module	(4*)	backside hose connection: Ø50mm; optional further Ø		
mounting bracket for ALSIDENT-arm	(5*)	ULT-U-Profil S50/75; for max. 1 ALSIDENT extraction arm		

(1*)



(3*)



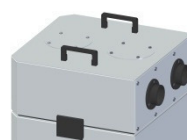
(5*)



(2*)



(4*)





DUST AND SMOKE

Functional principle:

At the clean-air side of the filter, a vacuum generator with a high pressure reserve produces a volume flow matched to the respective application. This volume flow can be individually and infinitely variably regulated. Thus, the polluted air will be reliably extracted.

The **particles** are reliably filtered in a multi-stage filtering system, consisting of pocket filter, filter mat and high efficiency particulate airfilter.

The large volume of the pocket filter provides a big capacity for coarse dust fractions. In addition the huge surface of the pockets keeps the pre-dust filter from clogging at an early stage.

The filter class H13 of the main filter makes it possible to extract suspended particles below 1 µm out of the raw gas stream. Thus separation efficiencies up to 99,95 % are reached.

Storage filter system

Filters which are replaced once they are saturated.

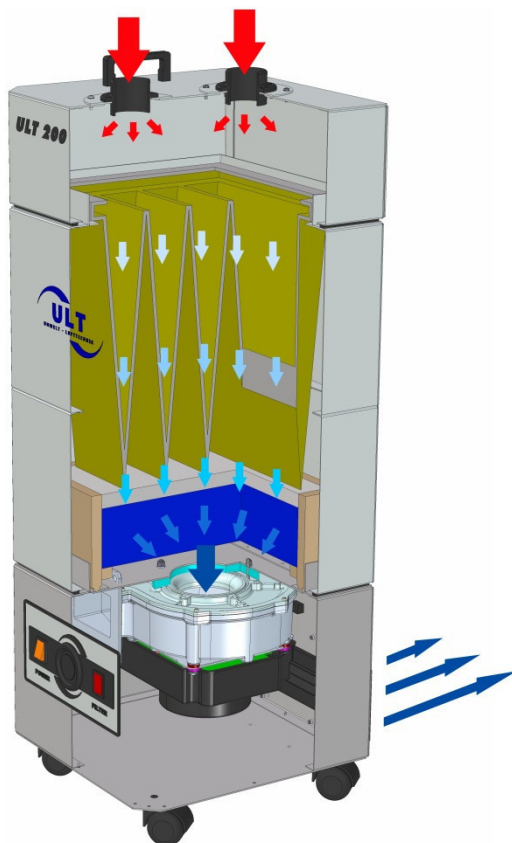
Main filter module TH

- | | |
|-------------------------------|------------------|
| (1) fine dust filter | Pocket filter F9 |
| (2) fine dust filter | Filter mat M5 |
| (3) particulate filter | HEPA filter H13 |

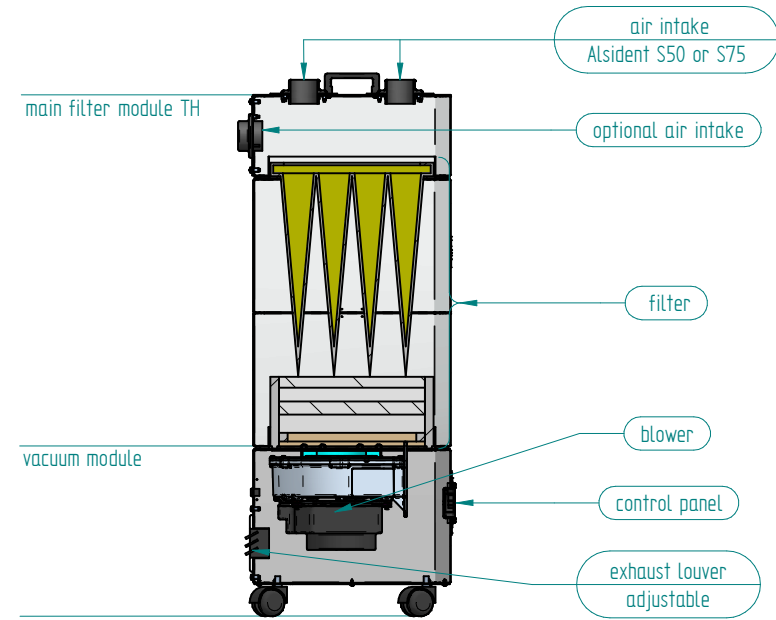
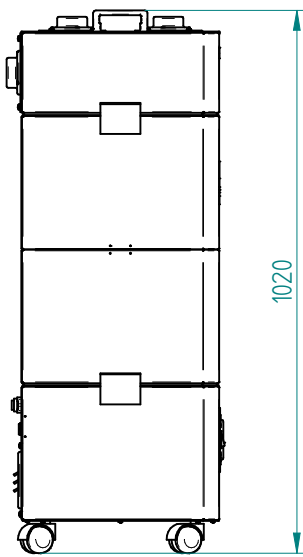
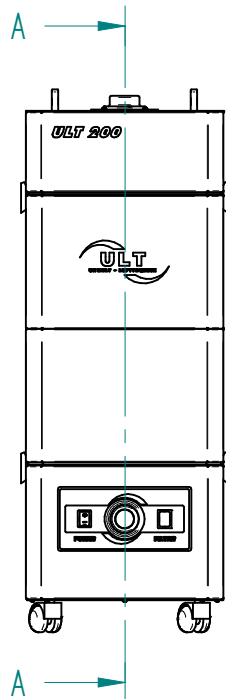
This excellent filter efficiency makes it possible to recirculate the **filtered air** and reduce energy costs.

Further additional options can be connected to the ASD 200 MD/HD TH unit. These are to be selected according to the respective requirements.

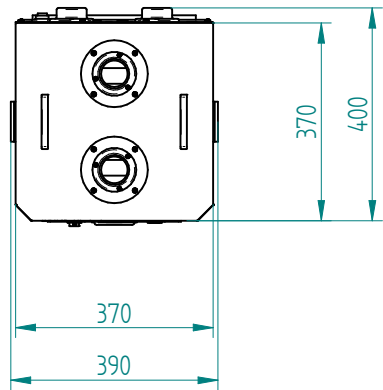
For the extraction and filtration from pollutants varying from this application case, other module combinations are available.



- Rohgas
- Filtration
- Reingas

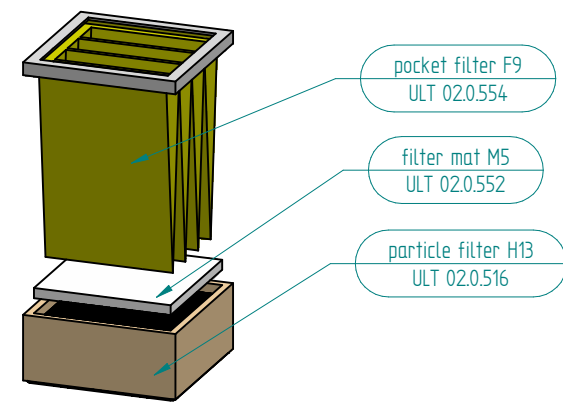


cutaway A-A



- loaded particle filter indicator
- air flow controller
- on/off switch

filter consisting of:



Weitere Maße sind dem 3D-Datensatz zu entnehmen. Für die Zeichnung behalten wir uns alle Rechte vor.
Other measure are to be taken from the 3D record. For the drawing we reserve ourselves all rights.



				ULT AG Am Gopelreich 1 D-02708 Lobau		designation ASD 200 MD/HD TH		
		2013	date		name		drawing number:	
001	base	15.07.13	JSACZ	edit.	15.07.	JSACZ	ULT 200_00_287	
issue	revision	day	name	verf.	Norm			scale: 1 : 10