

DATRON



ACCESSORIES

for DATRON CNC Milling Machines

DATRON

TABLE OF CONTENTS

» DATRON CNC Milling Machines (p. 4)

Machine Overview

Page 4-5

» Clamping Technique (p. 6)

Clamping Devices, Mechanical

Page 7-12

- DATRON compact bench vice (p. 8)
- DATRON Vario Vice (p. 9)
- Four-jaw chuck 125 mm (p. 10)
- T-slot module clamping technique (p. 11)
- Module clamping plates (p. 12)

Clamping Devices, Pneumatic

Page 13-14

- Short-stroke clamping unit (p. 14)

Vertical Clamping Systems

Page 15-17

- Vertical clamping system (p. 16)
- Pneumatic control unit (p. 17)

Clamping Device, Vacuum Technique

Page 18-22

- DATRON VacuCards (p. 19)
- Vacuum distributor (p. 21)
- Vacuum plates with meander slots (p. 20)
- Vacuum pumps (p. 22)

» Chip Management (p. 23)

Chip Evacuation Systems

Page 24-27

- DATRON CleanCut (p. 25)
- Industrial vacuum cleaner (p. 26)
- DATRON neo dust extraction system (p. 27)

Chip Control Systems

Page 28-30

- Blow-off nozzles (p. 29)
- DATRON chip conveyor (p. 30)

Ionization Systems

Page 31-34

- DATRON neo ionization bar (p. 32)
- Ion spray gun (p. 34)
- Ionization nozzles (p. 33)

» Axis Extensions (p. 35)

Rotary Axis

Page 36-37

- DATRON Axis4 (p. 37)

Rotary Swivel Axis

Page 38-39

- DATRON DSTPro (p. 39)

» Software & Control System (p. 40)

DATRON next

Page 41-46

- DATRON next software options (p. 42-46)

DATRON Live

Page 47-49

- DATRON Live software options (p. 48-49)

» Automation (p. 50)

Automation Hardware

Page 51-53

- Automatic doors (p. 52)
- Automation module and Digital I/O module (p. 53)

» Consumables (p. 54)

Cooling Lubricant

Page 55-57

- DATRON Graconol Plus (p. 56)
- DATRON ProCut 200 (p. 57)

» Customer Care (p. 58)

DATRON

MACHINE OVERVIEW

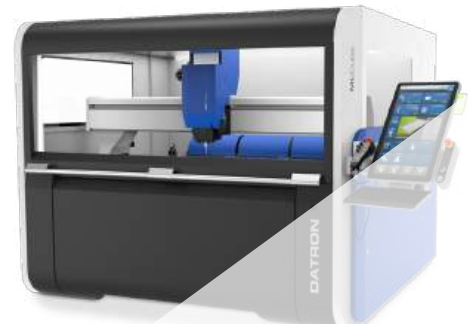
DATRON
neo



DATRON
M8Cube



DATRON
MLCube



& **ERGONOMIC
DYNAMIC**

& **PRODUCTIVE
VERSATILE**

& **LARGE-FORMAT
EFFICIENT**

| Axis | 3+1 | 3+2 | 3+1 |
|---------------------------|--|---|---|
| Traverse path (XxY) | 500 mm x 400 mm | 1,000 mm x 700 mm | 1,500 mm x 1,000 mm |
| Portal passage (Z) | 175 mm | 200 mm | 200 mm |
| Spindles | 2.0 kW HF-Spindel bis zu 40,000 rpm Direct shank | 1.8 kW – 4.0 kW HF-Spindel bis zu 60,000 rpm Direct shank or HSK-E 25 | 1.8 kW – 4.0 kW HF-Spindel bis zu 60,000 rpm Direct shank or HSK-E 25 |
| Feed/ Positioning feed | Up to 28 m/min | Up to 22 m/min | Up to 22 m/min |

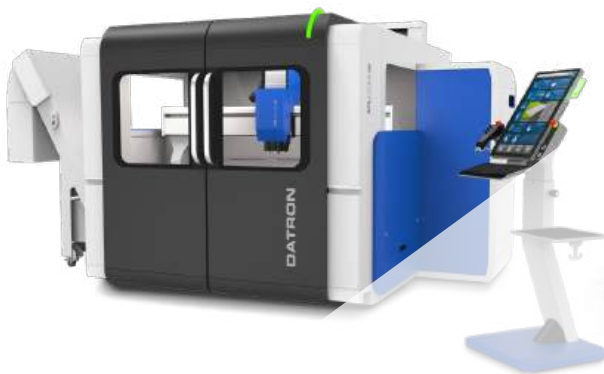
■ Batch size
 ■ Machining size
 ■ Chip volume per time unit

Properties/
characteristics

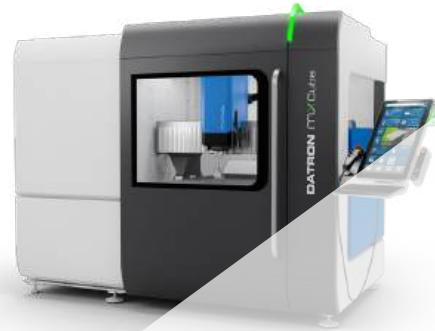


Each application is different, and we offer the perfect solution for your particular requirements: whether you need 3, 3+2 or 5 axes simultaneously, a high level of precision or outstanding economy. Our experts will be happy to advise you and help you find the best, most efficient solution for your application.

DATRON
MLCube Pro



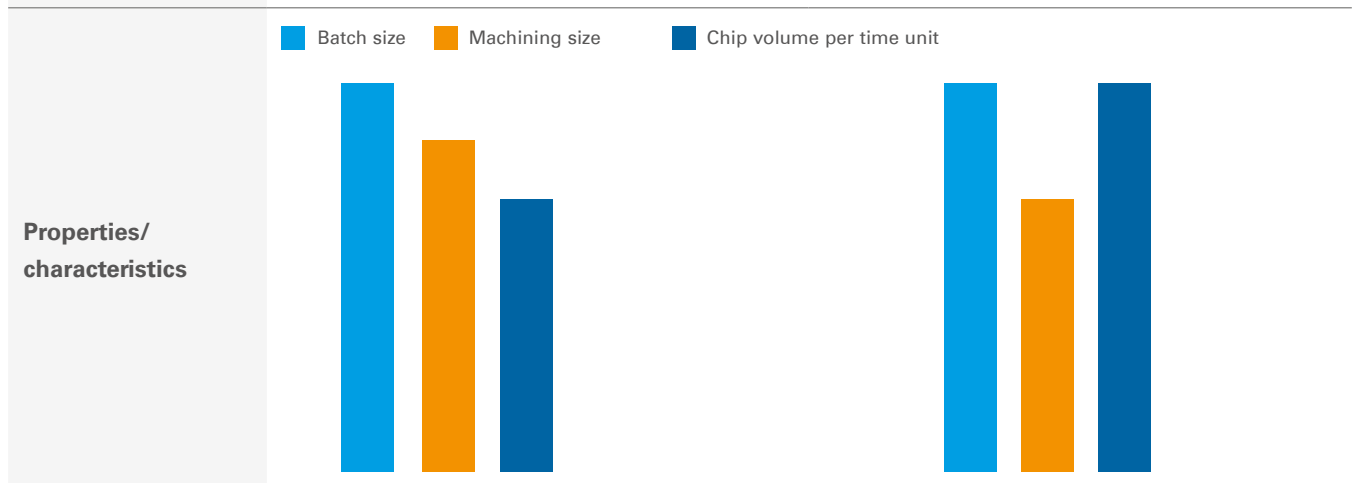
DATRON
MXCube



& **LARGE-FORMAT
PRODUCTIVE**

& **PROCESS RELIABILITY
POWERFUL**

| Axis | 3+1 | 3+2 |
|---------------------------|--|--|
| Traverse path (XxY) | 1,500 mm x 1,000 mm | 1,000 mm x 700 mm |
| Portal passage (Z) | 200 mm | 205 mm |
| Spindles | 3.0 kW–4.0 kW HF spindle up to 40,000 rpm HSK-E 25 | 4.0 kW–8.0 kW HF spindle up to 40,000 rpm HSK-E-25 or HSK-E-32 |
| Feed/ Positioning feed | Up to 22 m/min | Up to 40 m/min |



DATRON

CLAMPING TECHNIQUE

DATRON clamping techniques stand for precision and efficiency when it comes to securing work pieces. Our innovative clamping systems are designed for specific applications and for DATRON milling machines, allowing for fast securing of parts in a broad range of materials. The modular design clamping solutions are highly flexible to help you optimize production processes and minimize set-up times. You will be confident that the quality and reliability of the DATRON clamping systems will secure your parts with precision and will increase production.

» Clamping Devices, Mechanical

page 7-12

» Clamping Devices, Pneumatic

page 13-14

» Vertical Clamping Systems

page 15-17

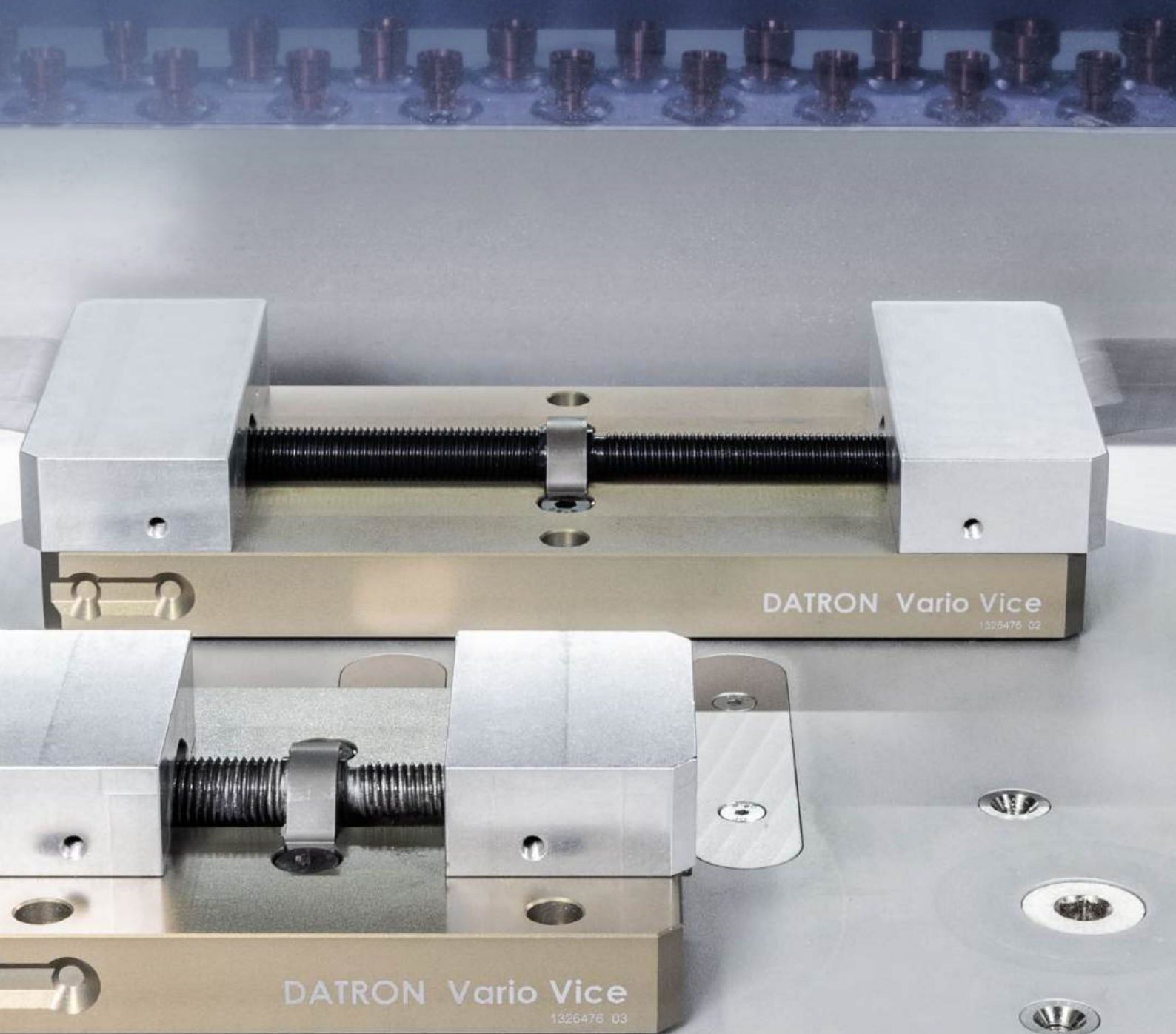
» Clamping Device, Vacuum Technique

page 18-22

DATRON

CLAMPING DEVICES, MECHANICAL

DATRON mechanical clamping devices offer precision and flexibility for a broad range of applications in CNC machining. Positively secure your work piece, with easy part loading and unloading, with reliable repeatability and accuracy. The innovative technology and robust design, contribute to efficient and cost-saving manufacturing.



DATRON

COMPACT BENCH VICE

The DATRON compact bench vice is ideal for applications requiring a high clamping force. With a maximum clamping force of 35 kN, it holds components securely in position. The double encapsulated spindle protects from chips and ensures reliable operation. Aluminum clamping jaws in two widths can be adjusted individually to various work piece geometries. The bench vice is available in guide lengths of 160 mm or 300 mm, with optional machinable aluminum clamping jaws for milling specific part geometries.



DATRON Compact Bench Vice

| Item no. | 0A01088J | 0A01088H |
|--------------------------------|---|-------------------|
| Basic body dimensions (LxWxH) | 160 x 125 x 50 mm | 300 x 125 x 50 mm |
| Clamping range (aluminum jaws) | 0-58 mm | 0-198 mm |
| Jaw width | 125 mm; 225 mm (optional) | |
| Clamping force (max.) | 35 kN | |
| Interface | DATRON cone grid | |
| Compatibility | DATRON neo, M8Cube, MLCube, MLCube Pro, MXCube | |
| Scope of delivery | DATRON compact bench vice 160 or 300 2x Aluminum clamping jaw 125 mm Ratchet incl. adapter Mounting screws | |

Optional Accessories

Aluminum Clamping Jaws

| Item no. | 0078936L | 0078936K |
|---------------------------|----------|----------|
| Basic body dimensions (L) | 125 mm | 225 mm |

DATRON

VARIO VICE 150/250

The DATRON Vario Vice is a very flexible bench vice that was specifically designed for DATRON milling machines. Solve a broad range of application requirements by using the quick change system for jaws, the quick change pallet mounting system, and or the robot gripper device. The compact design offers numerous options due to the design of a fixed center jaw. For example, it can also be used as a dual clamp – perfect for multiple part clamping.



| DATRON Vario Vice 150 | | | | DATRON Vario Vice 250 | | |
|-----------------------------------|---|----------|---------|-----------------------------------|----------|----------|
| Item no. | 0A01088L | 0A01088M | A01088N | 0A01088P | 0A01088Q | 0A01088R |
| Jaw width | 70 mm | 120 mm | 200 mm | 70 mm | 120 mm | 200 mm |
| Dimensions incl. jaws (L x W x H) | 150x120.4x46 mm | | | 250x120.4x46 mm | | |
| Clamping range | 0-50 mm (+ milled recess in jaw) | | | 0-150 mm (+ milled recess in jaw) | | |
| Clamping force (max.) | 5 kN | | | | | |
| Interface | DATRON cone grid; quick change pallet system | | | | | |
| Compatibility | DATRON neo, M8Cube, MLCube, MLCube Pro, MXCube | | | | | |
| Scope of delivery | DATRON Vario Vice 150 or 250 2x clamping jaw 70 mm, 120 mm or 200 mm | | | | | |

Optional Accessories

| | DATRON Vario Vice Clamping Jaw | | | DATRON Vario Vice Center Jaw | | |
|---------------------------|--------------------------------|----------|----------|------------------------------|----------|----------|
| Item no. | 0078936Q | 0078936P | 0078936T | 0078936S | 0078936R | 0078936U |
| Basic body dimensions (L) | 70 mm | 120 mm | 200 mm | 70 mm | 120 mm | 200 mm |

DATRON

FOUR-JAW CHUCK 125

The precision DATRON four-jaw chuck is designed for clamping round and square work pieces. Make quick jaw adjustments easily using a ratchet. The chuck has minimal interference in your working area due to its compact dimensions. Achieve precision setups with the clamping jaws pre-aligned with the machine. It is compatible with all DATRON CNC milling machines.



Four-Jaw Chuck 125 mm

| | |
|---|---|
| Item no. | 0A01088G |
| Dimensions incl. inner and outer jaws (L x W x H) | 180 x 180 x 98.2 mm |
| Clamping range | 0-125 mm |
| Clamping force (max.) | 31 kN |
| Interface | DATRON cone grid |
| Compatibility | DATRON neo, M8Cube, MLCube, MLCube Pro, MXCube |
| Scope of delivery | Four-jaw chuck 125 mm made of special casting 2x inward graded jaws made of hardened steel 2x outward graded jaws made of hardened steel Aluminum base plate Ratchet incl. adapter Basic jaw set to connect attachment jaws (4-piece) Aluminum attachment jaw set (4-piece) |

Optional Accessories

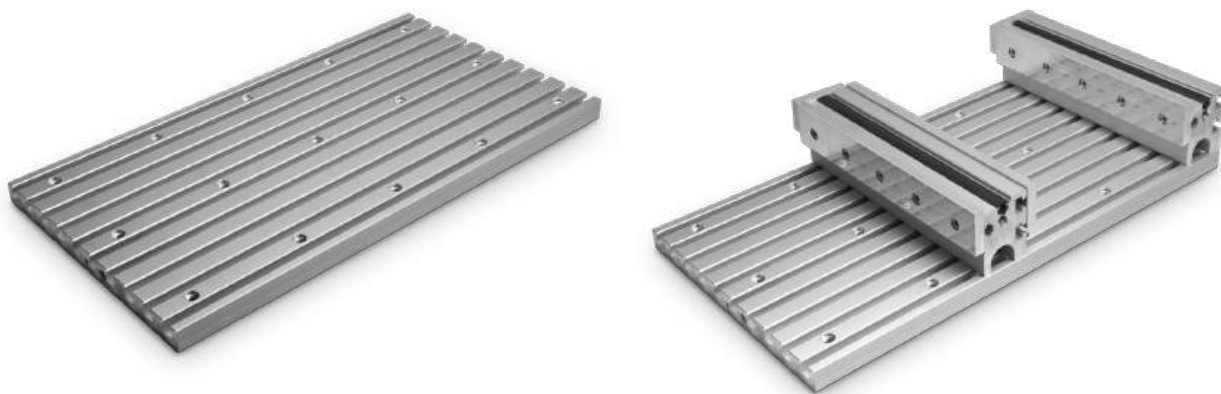
Aluminum Attachment Jaw Set (4-piece)

| | |
|----------|----------|
| Item no. | 0A01088I |
|----------|----------|

DATRON

T-SLOTS MODULE CLAMPING TECHNIQUE

The DATRON T-slot module clamping plate offers flexible mounting options by combining short-stroke clamping units and the fixed clamping jaws. The modules are quickly secured on the machining table using a vacuum suction system. Add versatility to your ML, M7, MV, M8Cube or M10 milling machines, with this module clamping system.



T-Slot Module Plate

| Item no. | 0A01622Q incl. fixed jaw: 0A01623Q | 0A01622R incl. fixed jaw: 0A01623R | 0A01622S incl. fixed jaw: 0A01623S | 0A01624H incl. fixed jaw: 0A01624G |
|---------------------------------------|--|---------------------------------------|---------------------------------------|---------------------------------------|
| Dimensions without fixed. jaw (LxBxH) | 500x250x20 mm | 700x250x20 mm | 1,000x250x20 mm | 700x1,000x20 mm |
| Interface | DATRON cone grid | | | |
| Compatibility | DATRON neo, M8Cube, MLCube, MLCube Pro, MXCube | | | |
| Scope of delivery | T-slot module clamping plate (with or without fixed jaw) Conical centering bushes Gasket | | | |

Optional Accessories

| | Fixed Jaw | | Fixed Jaw with Backrest | |
|---------------------------|-----------|----------|-------------------------|----------|
| Item no. | 0A01625 | 0A01625A | 0A01625E | 0A01625F |
| Basic body dimensions (L) | 250 mm | 1.000 mm | 250 mm | 1.000 mm |

DATRON

MODULE CLAMPING PLATES

The DATRON module clamping MS-P pallet plates are made from surface-milled aluminum with conic centering inserts in a 100 mm grid pattern allowing for mounting of optional clamping devices on the top surface. They can be secured by using fastening screws or mount in seconds using the vacuum suction system for cost-saving production. Set up your job efficiently using the quick-locating conical insert system with precise repeatability.

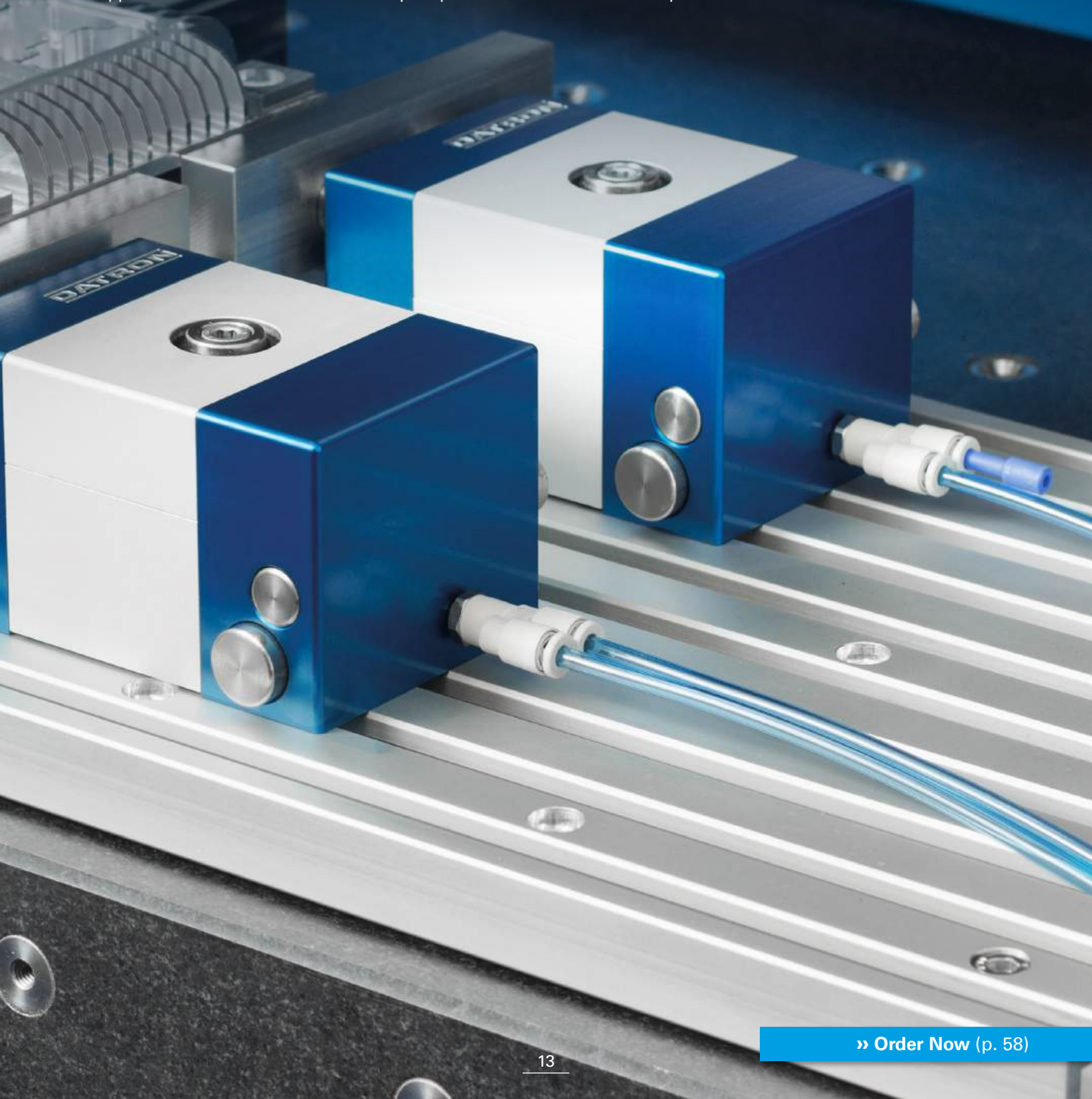
**Module Clamping Plate**

| Item no. | 0A01620A | 0A01620B |
|------------------------|---|-------------------|
| Dimensions (L x W x H) | 180 x 280 x 15 mm | 280 x 380 x 15 mm |
| Interface | DATRON cone grid | |
| Compatibility | DATRON neo, M8Cube, MLCube, MLCube Pro, MXCube | |
| Scope of delivery | Module clamping plate Conical centering bushes Gasket | |

DATRON

CLAMPING DEVICES PNEUMATIC

DATRON pneumatic clamping devices use compressed air for a precise and efficient holding of work pieces. They are characterized by easy handling and high repeat accuracy, allowing for quick and precise adjustments. These clamping devices increase the productivity and flexibility of manufacturing processes and are ideally suited for applications with short run times and quick part turn-over is of utmost importance.



DATRON

SHORT-STROKE CLAMPING UNIT

DATRON short-stroke clamping units offer maximum flexibility and are extremely easy-to-use for CNC machining. They can be set up quickly with one hand and at the push of a button, an impressive clamping force of up to 750 N will secure your work piece. These units are ideally suited for applications that require short change-over times and high precision. Designed for the use on T-slot plates, they can also be used for stationary use – perfect for demanding manufacturing challenges where speed and reliability are the priority.



| | Short-Stroke Clamping Unit Standard | Short-Stroke Clamping Unit Automated | Short-Stroke Clamping Unit DATRON neo |
|------------------------|---|--------------------------------------|---------------------------------------|
| Item no. | 0A01084A | 0A01084B | 0A01084C |
| Dimensions (L x W x H) | 130 x 110 x 65 mm | | |
| Clamping force (max.) | 100-600 N | | |
| Clamping range | T-slot technology allows for continuous adjustments | | |
| Operating pressure | 1-6 bar | | |
| Interface | T-slot module clamping technique | | |
| Compatibility | DATRON M8Cube, MLCube, MLCube Pro, MXCube | | DATRON neo |
| Scope of delivery | Short-stroke clamping unit Compressed air hose | | |

Optional Accessories

**Pneumatic Control Unit 8-fold
incl. dig. I/O Module 8 in / 8 out**

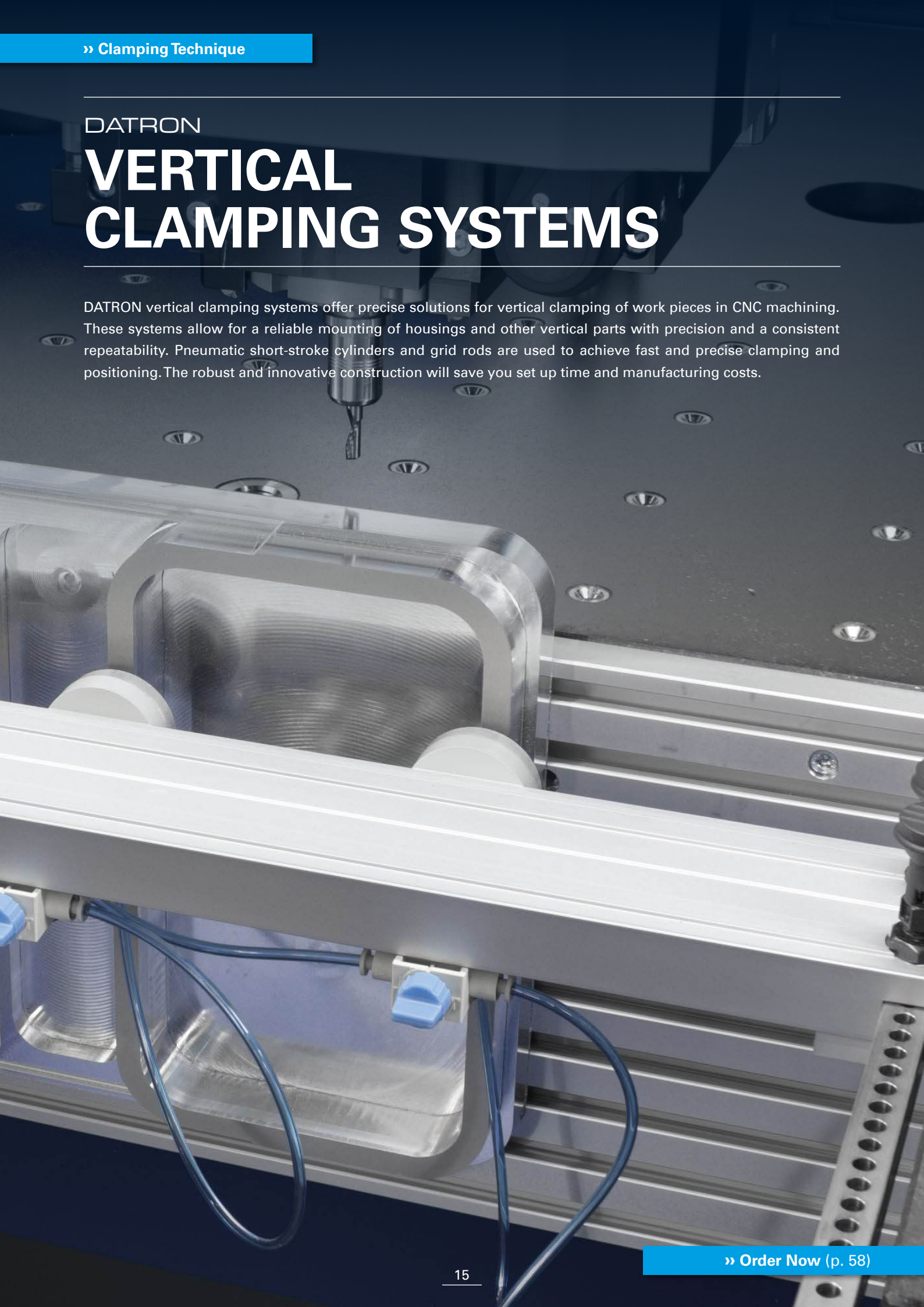
| | |
|-----------------------------------|------------------|
| Item no. | 0A01604Q |
| Basic body dimensions (L x W x H) | 170 x 80 x 60 mm |

» Pneu. Control Unit (p. 17)

DATRON

VERTICAL CLAMPING SYSTEMS

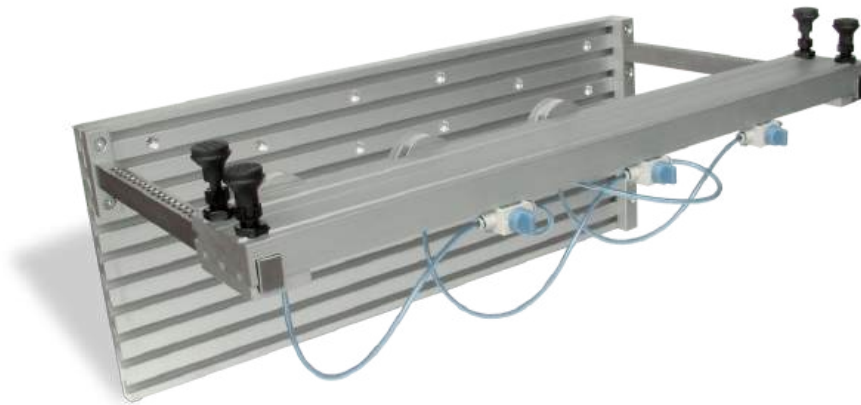
DATRON vertical clamping systems offer precise solutions for vertical clamping of work pieces in CNC machining. These systems allow for a reliable mounting of housings and other vertical parts with precision and a consistent repeatability. Pneumatic short-stroke cylinders and grid rods are used to achieve fast and precise clamping and positioning. The robust and innovative construction will save you set up time and manufacturing costs.



DATRON

VERTICAL CLAMPING SYSTEM

The DATRON pneumatic vertical clamping system was designed for the quick and easy clamping of housings. Developed for machines with a cut-out table, the clamping plate, equipped with T-slots, is secured vertically to the machining table. Several pneumatic short-stroke cylinders lock the vertical clamping beam with grid rods. The continuous air pressure on the cylinders is controlled individually by pneumatic valves, which makes precise clamping possible with this flexible system. This was designed for applications requiring speed and reliability.



| | Pneumatic Vertical Clamping System | Pneumatic Vertical Clamping System with Height Stop | |
|------------------------------------|--|---|---------------|
| Item no. | 0A01087B | 0A01087H | 0A01087K |
| Dimensions (L x W x H) | 130 mm x 110 mm x 65 mm | | |
| Clamping range (max.) | 575 mm | | |
| Clamping force per cylinder (max.) | 750N | | |
| Operating pressure | 1 bis 6 Bar | | |
| Interface | DATRON cone grid; quick change pallet system | | |
| Compatibility | DATRON M8Cube | | DATRON MLCube |
| Scope of delivery | Clamping system 3x short-stroke cylinders Compressed air hose Pneumatic valve | | |

Optional Accessories

| | Short-Stroke Cylinders |
|----------|------------------------|
| Item no. | 0690211D |

DATRON

PNEUMATIC CONTROL UNIT

For automated clamping, the pneumatic control unit by DATRON provides easy automation of the short-stroke clamping units. Up to eight clamping units can be actuated individually from a program, or manually via the manual control panel and/or the keyboard. This unit offers great flexibility and efficiency and allows for quick and precise adjustments during set up. Ideal for the most demanding manufacturing challenges, it automates production and improves the reliability of your work. Designed for DATRON machines, it optimizes results for every production run.



**Pneumatic Actuation Unit 8-fold
I/O Module 8 in/8 out**

| | |
|------------------------|--|
| Item no. | 0A01604Q |
| Dimensions (L x W x H) | 170 x 80 x 60 mm |
| Weight | 1 Kg |
| Compatibility | DATRON M8Cube, MLCube, MLCube Pro, MXCube |
| Scope of delivery | Pneumatic control unit 8-fold Digital in-/output module |

DATRON

CLAMPING DEVICE VACUUM TECHNIQUE

DATRON vacuum table technology is ideal for clamping flat work pieces and thin sheet materials. Secured by vacuum, you can hold multiple work pieces at one time offering additional flexibility. The micro-perforated sacrificial card stock, DATRON VacuCard, simplifies mounting of your material and protects the vacuum chuck. This work holding is ideal for various machining processes for precise and efficient CNC machining.



DATRON

VACUCARDS

Maximize the efficiency of your vacuum clamping technique with the DATRON VacuCard. This micro-perforated special card stock ensures an even distribution of the vacuum across the entire clamping area without having to cover unused areas. At the same time, the VacuCard protects your vacuum clamping chuck from damage by acting as a sacrificial layer. Benefit from optimized handling and accelerated work processes.

The DATRON VacuCard++, which has a grid of sealing adhesive squares is designed for clamping smaller and delicate work pieces. It maximizes the holding forces and minimizes vacuum losses, even with thin or structured sheet material. With the VacuCard++, be assured that your work pieces will be reliably secured, even at high milling forces, with consistent and precise results.



Fig. similar

VacuCard

| Item no. | 0A01617A | 0A01617X | 0A01617 | 0A01617L | 0A01616 | 0A01616L | 0A01617K | 0A01617I |
|-----------------------|--|------------------|------------------|------------------|-----------------|------------------|-----------------|-----------------|
| Dimensions (LxWxH) | 1,000x700x0.7 mm | | 1,000x500x0.7 mm | | 650x450x0.7 mm | | 500x400x0.7 mm | 500x200x0.7 mm |
| Material strength | 500g/qm | | | | | | | |
| Compatibility | DATRON neo, M8Cube, MLCube, MLCube Pro, MXCube | | | | | | | |
| Scope of delivery | 50x VacuCard | 500x VacuCard | 50x VacuCard | 500x VacuCard | 50x VacuCard | 500x VacuCard | 50x VacuCard | 50x VacuCard |

VacuCard++

| Item no. | 0A01618I | 0A01618F | 0A01618H | 0A01618E | 0A01618G | 0A01618D |
|--------------------|--|-----------------|------------------|-----------------|-----------------|-----------------|
| Dimensions (LxWxH) | 1,000x700x0.7 mm | | 1,000x500x0.7 mm | | 650x450x0.7 mm | |
| Material strength | 500g/qm | | | | | |
| Compatibility | DATRON neo, M8Cube, MLCube, MLCube Pro, MXCube | | | | | |
| Scope of delivery | 10x VacuCard ++ | 50x VacuCard ++ | 10x VacuCard ++ | 50x VacuCard ++ | 10x VacuCard ++ | 50x VacuCard ++ |

VacuCard+++

| Item no. | 0A01618N | 0A01618M | 0A01618K | 0A01618W |
|--------------------|--|------------------|------------------|------------------|
| Dimensions (LxWxH) | 1,000x700x0.7 mm | 1,000x500x0.7 mm | | 500x400x0.7 mm |
| Material strength | 500g/qm | | | |
| Compatibility | DATRON neo, M8Cube, MLCube, MLCube Pro, MXCube | | | |
| Scope of delivery | 10x VacuCard +++ | 10x VacuCard +++ | 50x VacuCard +++ | 20x VacuCard +++ |

DATRON

VACUUM PLATES WITH MEANDER SLOTS

The DATRON vacuum plates with meander slots were designed for vacuum clamping of sheet materials. Meandering slots in a grid of 100 x 100 mm regions provide an efficient distribution of the vacuum, that are individually adjustable allowing you to align the clamping area to your work piece. The micro-perforated DATRON VacuCard also acts as sacrificial layer offering a flexible area for your flat panel piece or pieces without cutting into the table.



Vacuum Plate 30

| Item no. | 0A03672E | 0A03672F | 0A03672G | 0A03672H |
|--------------------|---|---------------|-----------------|-----------------|
| Dimensions (LxWxH) | 500x500x30 mm | 700x500x30 mm | 1,000x500x30 mm | 1,000x700x30 mm |
| Weight | approx. 30 Kg | approx. 43 Kg | approx. 40 Kg | approx. 55 Kg |
| Interface | DATRON cone grid | | | |
| Compatibility | DATRON M8Cube, MLCube, MLCube Pro, MXCube | | | |
| Scope of delivery | Vacuum hoses; ground cables | | | |

Vacuum Plate 70

Vacuum Plate DATRON neo

| Item no. | 0A03671E | 0A03671F | 0A03671G | 0A03671H | 0A03702A |
|--------------------|---|---------------|-----------------|-----------------|---------------|
| Dimensions (LxWxH) | 500x500x30 mm | 700x500x30 mm | 1.000x500x30 mm | 1.000x700x30 mm | 500x200x35 mm |
| Weight | approx. 30 Kg | approx. 40 Kg | approx. 50 Kg | approx. 70 Kg | approx. 12 Kg |
| Interface | DATRON cone grid | | | | |
| Compatibility | DATRON M8Cube, MLCube, MLCube Pro, MXCube | | | | DATRON neo |
| Scope of delivery | Vacuum hoses; ground cables | | | | |

Optional Accessories

» VacuCards (p.19)

» Vacuum Distributor (p.21)

» Vacuum Pumps (p.22)

DATRON

VACUUM DISTRIBUTOR

The DATRON vacuum distributors, complete with shut-off valves, allow you to turn on and off the vacuum suction to each modular vacuum table. Each valve has venting for easy part removal for each table. The venting immediately exhausts the suction pressure, allowing for fast and safe work piece handling. The vacuum distributor is mounted under the machining table, saving space and is available in a range of sizes or zones, upon request.



Fig. similar

| | Vacuum Distributor 2-Fold | Vacuum Distributor 2-Fold Pro | Vacuum Distributor 3-Fold Pro | Vacuum Distributor 6-Fold Pro |
|-------------------|--|--|--|--|
| Item no. | 0A03673E | 0A03673A | 0A03673B | 0A03673C |
| Compatibility | DATRON MXCube | DATRON M8Cube | DATRON MLCube with cut-out table | DATRON MLCube without cut-out table |
| Scope of delivery | Shut-off valves Additional shut-off valve with venting Hose lines Mounting material | | | |

DATRON

VACUUM PUMPS

DATRON offers a range of vacuum pumps to meet your application needs. The size of pump required depends on the size and quantity of vacuum chucks used. These pumps are specified for the efficient and reliable vacuum pressure needed for the machining of your work pieces within your applications.



Fig. similar

| Vacuum Pump | | | | | Vacuum Pump DATRON neo |
|---------------------------|--|---------------------------|--------------------|--------------------------|---------------------------|
| Item no. | 0A03633A | 0A03633B | 0A03633C | 0A03633D | 0A03702B |
| Dimensions (L x W x H) | 748 x 433 x 310 mm | 776 x 582 x 420 mm | 630 x 360 x 630 mm | 776 x 582 x 420 mm | 630 x 360 x 630 mm |
| Design | Rotary vane | | | | |
| Lubrication | Oil sump | | | | |
| Suction power | 100 m³/h | 200 m³/h | 250 m³/h | 200 m³/h | 25 m³/h |
| Motor rated power | 3.0 kW | 5.5 kW | 7.5 Kw | 5.5 kW | 740W |
| Operating voltage | 3x 400V 16A 50 Hz | | | | |
| Sound pressure level | 67 db(A) | 72 db(A) | | | 62/64 db(A) |
| Suction connection | 1 1/4" | 2" | | 1 1/4" | 1/2" |
| Weight | approx. 70 kg | approx. 150 kg | approx. 200 Kg | approx. 150 kg | approx. 60 Kg |
| Compatibility | DATRON M8Cube, MXCube | DATRON MLCube, MLCube Pro | | DATRON M8Cube, MXCube | DATRON neo |
| Scope of delivery | Rotary vane vacuum pump Motor protection switch Suction filter Three-phase contactor Vacuum hose 5 m | | | | |

DATRON

CHIP MANAGEMENT

Proper chip management is critical for smooth and productive manufacturing. It prevents chips from interfering with the work process or impairing the quality of the work pieces. With effective chip management, you not only increase the efficiency and precision of the production, but also extend the service life of the tools. Additionally, you are helping support the environment and the safety of your operators by disposing the cutting debris safely and responsibly.

» Chip Evacuation Systems

page 24-27

» Chip Control Systems

page 28-30

» Ionization Systems

page 31-34

DATRON

CHIP EVACUATION SYSTEMS

Evacuation of chips and dust by vacuum achieves a clean and safe work environment while improving the production and quality of your work pieces. DATRON offers a range of extraction solutions specifically developed for various application requirements. These systems optimize your machining efficiency and helps protect the users by creating a cleaner and safer work environment.

CleanCut

DATRON

CLEANCUT

The DATRON CleanCut system was specifically designed for removal or extraction of small chips and particles on flat sheet material. This innovative technology significantly reduces cleaning of the machine and enables nearly chip-free working. Due to the contact-free suction head, the system is also suitable for machining sensitive surface finishes without scratching. The suction head automatically deploys and extracts, which offers additional time savings. The cutting tool is effectively cooled with the optional four-nozzle spray misting head during the vacuum process and achieves nearly residue-free machining.



DATRON CleanCut

| Item no. | 0A01177U | 0A01177V | 0A01177W |
|-------------------|--------------------------------------|---------------|---------------|
| Compatibility | DATRON M8Cube | DATRON MLCube | DATRON MXCube |
| Portal passage | 160 mm | | |
| Hose connection | 50 mm | | |
| Scope of delivery | CleanCut base module; suction funnel | | |

*Installation service necessary

Optional Accessories

Industrial Vacuum Cleaner

» Industrial Vacuum Cleaners (p. 26)

| Item no. | 0A01177 | 0A01177E |
|----------|---------|----------|
|----------|---------|----------|

DATRON

INDUSTRIAL VACUUM CLEANER

High-performance DATRON industrial vacuum cleaners are essential for a clean and safe work environment when machining. They efficiently remove chips and dust, optimize the machine performance, and protect the health of the users. DATRON offers a wide range of industrial vacuum cleaners designed to meet customer-specific application needs. There are special devices available for extracting the fine dust associated with graphite machining. Wet and dry vacuum cleaners are available to suction off explosive dust scenarios. When an efficient and safe work environment is critical, there are specific extraction solutions available for the DATRON CleanCut system.



Fig. similar

| | Industrial Vacuum Cleaner | | Safety Vacuum Cleaner Type 22 |
|----------------------|---|--|--|
| Item no. | 0A01177 | 0A01177E | 0A01180A |
| Pre-separator | ✓ | - | - |
| Dimensions (LxWxH) | 850 x 760 x 1,700 mm | | 605 x 580 x 970 mm |
| Air quantity | 320 m³/h | | 200 m³/h |
| Output | 3,000 W | | 1,500 W |
| Operating voltage | 3x400V (16A) | | 230V |
| Sound pressure level | 60 dB(A) | | 57 dB(A) |
| Weight | 230 kg | 145 kg | 26 kg |
| Compatibility | DATRON M8Cube, MLCube, MLCube Pro, MXCube | | |
| Scope of delivery | Industrial vacuum cleaner Tube duct All connections Tubing approx. 3 m 160 l pre-separator Vacuum cleaner control system | Industrial vacuum cleaner Tube duct All connections Tubing approx. 3 m Vacuum cleaner control system | Disposal bag with closing lid 2x suction hose (1x diameter 50 mm, L: 4 m 1x diameter 27 mm, L: 3.5 m) Sleeve |

Optional Accessories

| | Pre-Separator |
|-------------------------------|----------------------|
| Item no. | 0069653C |
| Basic body dimensions (LxWxH) | 720 x 820 x 1,360 mm |

DATRON

NEO DUST EXTRACTION SYSTEM

The DATRON neo dust extraction system set minimizes dust and debris from entering the air ensuring a clean working environment for flat sheet material. Compressed air pneumatically raises and lowers the brush head from a stored position to resting directly on the work piece when suctioning. The extracted dust is removed from the machining area through a flexible hose. The industrial vacuum cleaner is included in the set and can conveniently be switched on and off automatically by the machine control system.



DATRON neo Dust Extraction System

| Item no. | 0A03705 | 0A03705A |
|---------------------------|--|--|
| Industrial vacuum cleaner | ✓ | - |
| Dimensions (LxWxH) | 395x440x653 mm | |
| Design | mit 18l Beutel | |
| Air quantity | 285 m³/h | |
| Output | 1,100 W | |
| Operating voltage | 230 V | |
| Sound pressure level | 66 dB(A) | |
| Filter class | H14 | |
| Weight | approx. 34 kg incl. industrial vacuum cleaner | |
| Scope of delivery | Suction brush with drive and suction head Suction hose with adapter for suction Pneumatic hose Industrial vacuum cleaner incl. control cable and suction connection Hepa filter H14 Filter bag 18 l | Suction brush with drive and suction head Suction hose with adapter for suction Pneumatic hose |

Optional Accessories

| | Hepa Filter H14 | Filter Bag 18 l |
|----------|------------------------|------------------------|
| Item no. | 0069666B | 0069666A |

DATRON

CHIP CONTROL SYSTEMS

Chip management systems provide for a clean, uninterrupted machining process by efficiently removing chips from the work piece surface and the machining area. This keeps the working area of your milling machines clean at all times, which increases the machine performance and shortens production times. Perfect for automated manufacturing environments, these systems maximize the efficiency of your production.



DATRON

BLOW-OFF NOZZLES

The DATRON blow-off nozzles use compressed air to remove chips from the work piece surface and the machining area during the milling process. Mounted on the Z-axis, it keeps the work area, accessories and work holding free from chips. This accessory is ideal for applications when you need to prevent chips from accumulating on the work piece and keeping the surface finish clean. For improved work piece quality and uninterrupted machining, these blow-off nozzles can be beneficial in saving you time and money.



Double Blow-Off Nozzle

| | |
|----------------------|--|
| Item no. | 0A01132 |
| Quantity | 2 blow-off nozzles on the left and right side of the Z-axis |
| Operating pressure | 6 bar |
| Software requirement | DATRON next from Version 3.0.42 |
| Compatibility | DATRON M8Cube, MLCube, MLCube Pro |
| Scope of delivery | 2x blow-off nozzles Control unit Pneumatic hose Side cover Z-axis |

*Installation service necessary

DATRON

CHIP CONVEYOR

The DATRON chip conveyor is designed to reliably remove chips from the work area of the milling machine. Specifically designed to meet the requirements of HSC machining of aluminum, it effortlessly will remove both short and long chip fragments. This chip conveyor is ideal for machines in automated, high-volume production because it can process a large quantity of chips, keeping the working area clean, optimizing the machine performance while reducing manufacturing costs.



Chip Conveyor

| | |
|--------------------|--|
| Item no. | 0A01170A |
| Dimensions (HxWxD) | 1,985 x 3,574 x 800 mm |
| Rising angle | 0°, 30°, 45°, 60°, 75° |
| Operating voltage | 3x400V (16A) |
| Chain pitch | 40 mm |
| Design | Endless chip conveyor |
| Weight | 420 kg (without packaging) |
| Compatibility | DATRON MXCube, MLCube Pro |
| Scope of delivery | Chip conveyor Mounting material Control cable Mains supply line |

*Installation service necessary

DATRON

IONIZATION SYSTEMS

Neutralize statically charged plastic chips and eliminate them from clinging to your machine and work piece with the ionization system. Benefits include more accurate and faster part turn over, clean work pieces, faster cleanups, extended tool life and reduced machine maintenance. Additionally, you are improving the safety of your production. For maximum precision, efficiency, and outstanding results every time, the ionization system is the solution.



» Order Now (p. 58)

DATRON

NEO IONIZATION BAR

The DATRON ionization bar neutralizes electrostatically charged chips by releasing ionized compressed air. These chips are directly transported into the chip box, which significantly reduces the required cleaning in the machine interior. This is conveniently activated with the DATRON next control system and supports a clean and efficient production.



DATRON neo Ionization Bar

| | |
|------------------------|--|
| Item no. | 0A03712 |
| Dimensions (L x W x H) | 552 x 23.8 x 28.4 mm |
| Output voltage | max. 8 kV |
| Operating voltage | 21-27V DC |
| Compatibility | DATRON neo |
| Scope of delivery | DATRON neo ionization bar Compressed air supply |

*Installation service necessary

DATRON

IONIZATION NOZZLES

The ion spray nozzles are mounted directly to the Z-axis, discharging chips and causing them to fall to the machining table making it easier to clean the machine. These nozzles are controlled automatically; however, they cannot be mounted when the DATRON CleanCut system, the brush head or the DATRON next camera are installed.



Ionization Nozzles

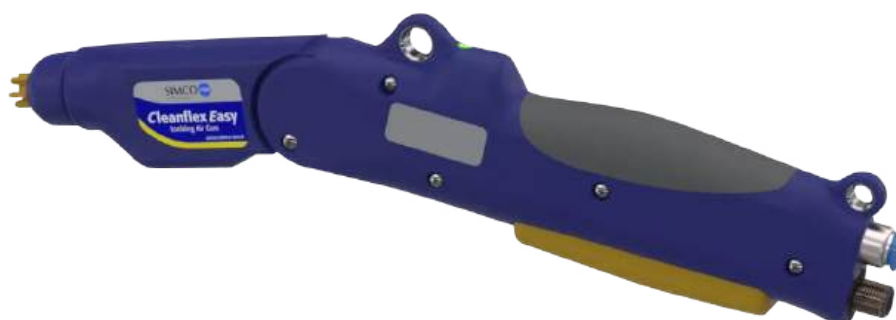
| Item no. | 0A01182T | 0A01182J | 0A01182R | 0A01182L |
|-------------------------------|--|--------------------------------------|--|--------------------------------------|
| Power unit dimensions (LxWxH) | 240 x 125 x 95 mm | | | |
| Output voltage | 6.4 kV | | | |
| Operating voltage | 100-240 V AC | | | |
| Compatible with CleanCut | - | ✓ | - | ✓ |
| Including ion spray gun | - | - | ✓ | ✓ |
| Compatibility | DATRON M8Cube, MLCube, MLCube Pro | DATRON M8Cube, MLCube, MLCube Pro | DATRON M8Cube, MLCube, MLCube Pro | DATRON M8Cube, MLCube, MLCube Pro |
| Scope of delivery | 2x ion spray nozzles with supply cable Power unit 230 V / 50 Hz / 7 kV Filter pressure regulator Connection accessories | | 2x ion spray nozzles with supply cable Ion spray gun with 3 m cable (hand-held gun) Power unit 230 V / 50 Hz / 7 kV Filter pressure regulator Connection accessories | |

*Installation service necessary

DATRON

ION SPRAY GUN

The ion spray gun offers a hand held solution for the removal of electrostatically charged chips. Quickly spray the ionized compressed air over the machine enclosure and remove the sticking statically charged chips. The gun can be installed in the field by simply plugging it into the machine 230 volt receptacle and is manually operated with no connection to the machine control.



Ion Spray Gun

| | |
|---------------------------|---|
| Item no. | 0A01182 |
| Dimensions (LxWxH) | 195 x 120 x 33 mm |
| Range | 300 mm |
| Filter pressure regulator | ✓ |
| Operating voltage | 24 V DC |
| Operating pressure | 1-7 bar |
| Compatibility | DATRON neo, M8Cube, MLCube, MLCube Pro, MXCube |
| Scope of delivery | Ion spray gun with 5 m cable Power unit 230 V / 24 V Filter pressure regulator 6 m pneumatic hose with couplings |

DATRON AXIS OPTIONS

Expand your machine's capabilities with an optional rotary axis creating a more flexible and high-performance 4- or 5-axis system. This allows you to improve the precision of multi-sided parts while reducing cycle times. This valuable investment will allow you machine complex parts more efficiently.

[» Rotary Axis](#)
page 36-37

[» Rotary 4th & 5th Axis](#)
page 38-39



DATRON ROTARY AXIS

The integration of a rotary axis expands your DATRON 3-axis milling machine to easily machine multi-sided or cylindrical parts. With an additional rotating axis, you can machine your work pieces at a variety of angles and levels, which makes complex geometries easier to machine. The advantage: Efficiently work without repeated re-clamping – everything is in one setup. This is how you can increase your productivity and expand your manufacturing options. This rotary axis will transform your 3-axis milling machine into a more flexible and more precise tool and take your capabilities to a new level.



DATRON

AXIS4

Expand the machining capabilities of your DATRON milling machine with the DATRON Axis4 rotary axis. This innovative option allows you to machine on multiple sides or cylindrical parts in a single clamping operation. Increase the flexibility and efficiency of your machining process by adding a fourth axis allowing you to reduce set-up times and achieve precise results that would be difficult to obtain with a conventional 3-axis machine. Achieve short production times while maintaining accuracy and quality from the high dynamics rotary axis.



DATRON Axis4

| | |
|-------------------------------|---|
| Item no. | 0A03704I |
| Basic body dimensions (LxWxH) | 109 x 244 x 145 mm |
| Peak height | max. 55 mm (deviating when using the optional accessories) |
| Peak width | max. 210 mm / 1,210 mm (depending on DATRON machine type and accessories) |
| Drive | 200 W AC-SERVO with toothed belt, multi-turn absolute value encoder |
| Speed / rpm | max. 60 rpm |
| Resolution | < 0.0001° |
| Compatibility | DATRON neo, M8Cube, MLCube, MLCube Pro, MXCube |
| Scope of delivery | DATRON Axis4 rotary axis on module clamping plate |

*Installation service necessary

Optional Accessories

| | Tailstock | Three-Jaw Chuck | Centric Clamping Vice Jaw Width 46 mm |
|--------------------|---|---|---|
| Item no. | 0A03704B | 0A03704C | 0A03704D |
| Dimensions (LxWxH) | 330 x 160 x 114.5 mm | 106 x 106 x 63.5 mm | |
| Seat | MK2 | - | - |
| Clamping range | - | 2-80 mm | 0-65 mm |
| Clamping force | - | 13 kN | 6 kN |
| Scope of delivery | Tailstock incl. Module clamping plate 1x revolving lathe center | Three-jaw chuck incl. mounting flange 1x set inward graded jaws 1x set outward graded jaws | Centric clamping vice inc. mounting flange |

DATRON

ROTARY SWIVEL AXIS

Adding a 4th and 5th axis are powerful additions for a 3-axis milling machine, enabling you to machine more complex and multi-sided parts. Machine work pieces at multiple angles without re-clamping your part, reducing your production times and lowering the chance for errors. The 4th and 5th axis will elevate your machine capabilities into a flexible 5-axis system that can machine complex geometries precisely in one step.



DATRON

DSTPRO

The DATRON DST Pro offers high precision for 3D and 5-sided machining of work pieces. The rotary/swivel table seamlessly supports complex five-axis simultaneous machining allowing you to machine five-sided work pieces in a single setting. Conical centering inserts are used for precision locating and mounting in the machine, while the integrated quick change pallet vice ensures exact pneumatic clamping with high repeatability accuracy. Optimize your manufacturing process with this high-precision and reliable option.



Fig. similar

DATRON DSTPro

| | |
|-------------------------------|---|
| Item no. | 0A01131I |
| Basic body dimensions (LxWxH) | 170x800x285 mm |
| Slewing range (swivel arm) | -10°-110° |
| Swivel range (swivel axis) | 360° |
| Weight | 38 kg |
| Compatibility | DATRON M8Cube, MXCube (prerequisite: cut-out table) |
| Scope of delivery | Quick change pallet system and bench vice Adapter plate Mounting jaws for insertion in the machine Supply cable DATRON DSTPro calibration ball for DATRON next (item no. 0694782) |

*Installation service necessary

Optional Accessories

| | Three-Jaw Chuck | Four-Jaw Chuck | Collet Chuck |
|--------------------|---|----------------|---|
| Item no. | 0A01123A | 0A01123B | 0A01123C |
| Dimensions (LxWxH) | 106x106x63.5 mm | | 100x100x65.3 mm |
| Clamping range | 2-80 mm | | ER32 |
| Clamping force | 13 kN | | - |
| Scope of delivery | Three- or four-jaw chuck on adapter plate for DATRON DSTPro | | Collet chuck on adapter plate for DATRON DSTPro |

DATRON

SOFTWARE & CONTROL SYSTEM

With the DATRON control and software solutions, you will be able to revolutionize the operation and monitoring of your milling machines. By combining state-of-the-art technology with an intuitive user interface, our systems allow you to easily operate the machine while improving precision. DATRON offers custom-tailored software solutions that will increase your efficiency and help you implement even the most demanding projects safely and productively including real-time monitoring of the machine status. Discover the countless possibilities on how your milling machine will be more efficient and user-friendly.

» DATRON next
page 41-46

» DATRON Live
page 47-49



reddot award 2016
winner interface design

DATRON NEXT

DATRON next sets a new bar for CNC control systems and makes complex milling processes easier than ever. The intuitive user interface, similar to a smartphone, provides fast and safe operation for beginners and professionals alike. Thanks to the integrated camera and swipe gestures, you can easily set up your work pieces. The 3D simulation offers visual validation, minimizes errors, and improves your accuracy. DATRON next - milling was never easier!



DATRON

NEXT SOFTWARE OPTIONS

Use the innovative software options of DATRON next to optimize your machining process and increase the efficiency of your production. Whether you need protected areas, user management, or automatic surface compensation – adapt your machine precisely to your requirements.

Surface Profile

The DATRON next surface profile function facilitate precise measurements and automatic compensation of any irregularity of the work piece surface. With this option, height deviations can be compensated quickly and easily, resulting in improved part quality. The intuitive interface and seamless integration with the camera make the set-up and function very user-friendly.



Surface Profile

| | |
|----------------------------|-------------------------------|
| Item no. | 0A01385A |
| Software requirement | DATRON next from Release 3.0 |
| Required order information | Machine number, email address |
| Scope of delivery | Online license |

Protected Areas

With the Protected Areas option, you can define specific zones in the working area of the machine that cannot be entered into with the cutting tool. This offers additional safety and prevents damage to machine components. The function is easy to set-up, supported with 3D visualization, ensuring safe and efficient machining.

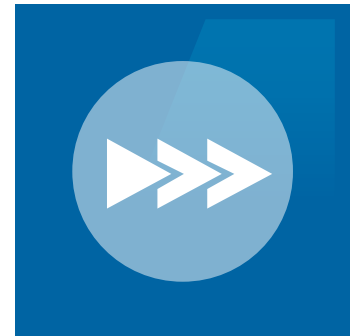


Protected Areas

| | |
|----------------------------|-------------------------------|
| Item no. | 0A01385B |
| Software requirement | DATRON next from Release 3.0 |
| Required order information | Machine number, email address |
| Scope of delivery | Online license |

Multiple Version

The multiple version of DATRON next allows the quick and efficient manufacturing of multiple identical work pieces from a single blank. In a matter of seconds, you can create a matrix of parts, in different locations, without changing the original milling program. This function is ideal for nesting production and optimizes productivity.



Multiple Version

| | |
|----------------------------|-------------------------------|
| Item no. | 0A01385C |
| Software requirement | DATRON next from Release 3.0 |
| Required order information | Machine number, email address |
| Scope of delivery | Online license |

Spare Tool Management

The DATRON next spare tool management monitors tool wear and automatically replaces worn tools without interrupting the milling program. This functionality ensures continuous machining and part quality. The comprehensive options allow customization of your production requirements, increasing the efficiency of the machining process.



Spare Tool Management

| | |
|----------------------------|-------------------------------|
| Item no. | 0A01385D |
| Software requirement | DATRON next from Release 3.0 |
| Required order information | Machine number, email address |
| Scope of delivery | Online license |

User Management

The DATRON next user management allows you to create multiple users, with different rights, on the machine. This function offers protection from unintended changes and allows a safe and controlled operation. Users can conveniently log in using the USB key or password and the settings can be easily transferred to other machines.



User Management

| | |
|----------------------------|-------------------------------|
| Item no. | 0A01385I |
| Software requirement | DATRON next from Release 3.0 |
| Required order information | Machine number, email address |
| Scope of delivery | Online license |

Recticle Hair Cross Measurement

With the DATRON next reticle hair cross measurement, you can align components visually in the live image of the camera. Similar to augmented reality, a reticle hair cross is displayed to simplify the positioning of the work piece and allow for a precise zero point setting. This function ensures an alignment of the component without tactile probing and speeds up your set-up process.



Recticle Hair Cross Measurement

| | |
|----------------------------|-------------------------------|
| Item no. | 0A01385F |
| Software requirement | DATRON next from Release 3.0 |
| Required order information | Machine number, email address |
| Scope of delivery | Online license |

SimPL-PLC

DATRON next SimPL-PLC allows for the automatic execution of outside programs based on the machine status. This function is very helpful for automation integration and supports an efficient and seamless production.

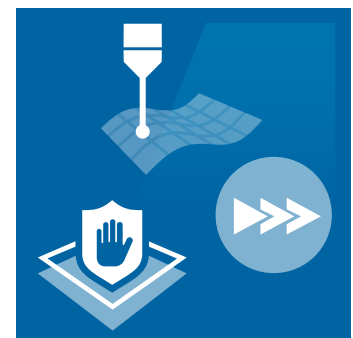


SimPL-PLC

| | |
|----------------------------|-------------------------------|
| Item no. | 0A01385E |
| Software requirement | DATRON next from Release 3.0 |
| Required order information | Machine number, email address |
| Scope of delivery | Online license |

Universal

The DATRON next “Universal” combination package bundles three popular and coordinated software options that significantly increase the efficiency and safety of your milling machine. This package offers cost-efficient solutions and optimizes processes by including, precise surface measurements, protected working areas, and quick multiple execution of work pieces. This is ideal for users who want to utilize their machine in a versatile and highly efficient way.

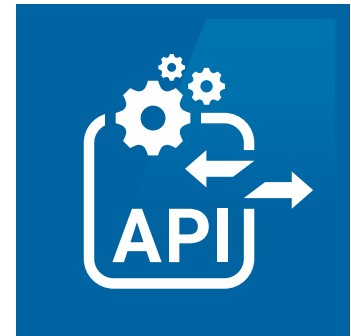


Universal Bundle

| | |
|----------------------------|-------------------------------|
| Item no. | 0A01386A |
| Software requirement | DATRON next from Release 3.0 |
| Required order information | Machine number, email address |
| Scope of delivery | Online license |

REST API Basic

DATRON next REST API Basic offers a powerful programming interface that allows you to access internal operating parameters of your machine. Ideal for integration of third-party systems, such as MES, ERP or IoT platforms, allowing you to monitor and analyze machine data via separate dashboards or analytical tools. This interface opens a broad range of options for the optimization of your production process.

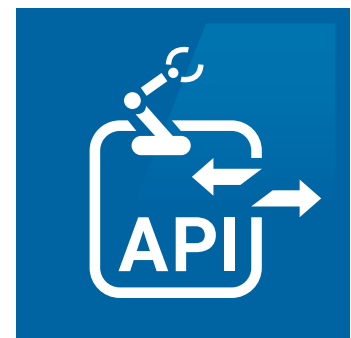


REST API Basic

| | |
|----------------------------|-------------------------------|
| Item no. | 0A01388A |
| Software requirement | DATRON next from Release 3.0 |
| Required order information | Machine number, email address |
| Scope of delivery | Online license |

REST API Automation

With REST API Automation, DATRON next expands the functionalities of the Basic version with automated control options. In addition to the access of the operating data, programs can be executed, paused or canceled, and user-defined variables can be read and written. This API offers greater flexibility to adapt and control your machines using third-party software and supports a seamless integration in complex manufacturing environments.



REST API Automation

| | |
|----------------------------|-------------------------------|
| Item no. | 0A01388B |
| Software requirement | DATRON next from Release 3.0 |
| Required order information | Machine number, email address |
| Scope of delivery | Online license |

DATRON LIVE

For real-time monitoring and controlling of DATRON milling machines, DATRON Live is the perfect software solution. You can access the machine status, program progress, and camera images of the machining process, from any networked device, allowing comprehensive control. Additionally, the software provides insights to the tool status and supports simple remote-control functions. DATRON Live is perfect for production managers, CAM programmers, and maintenance personnel, who are responsible for an efficient and trouble-free operation.



DATRON

LIVE SOFTWARE OPTIONS

The DATRON Live Apps allow seamless monitoring and control using a smartphone or PC. The Cockpit and Camera Apps offer greater control and efficiency in your manufacturing process. Make your production fit for the digital future!

Cockpit App

The Cockpit App provides access to critically important operating data and the status of your DATRON next machine in real time. Ideal for machine operators, maintenance personnel, and production managers, who need accurate information on job progress, tool status and machine operation. The app graphically displays the machining progress and monitors vacuum and compressed air status.



Cockpit App

| | |
|----------------------------|------------------------------------|
| Item no. | 0A01389A |
| Software requirement | DATRON next from Release 3.0 |
| Required order information | Machine number, email address |
| Scope of delivery | Online license to activate the app |

Camera App

You can use the Camera App to monitor the machining area of your DATRON next machine live. Access the camera stream remotely to observe the work progress of your work piece without having to be on site. A perfect addition to the Cockpit App that provides a simple solution for visually checking items such as chip accumulations and work piece in integrity.



Camera App

| | |
|----------------------------|------------------------------------|
| Item no. | 0A01389B |
| Software requirement | DATRON next from Release 3.0 |
| Required order information | Machine number, email address |
| Scope of delivery | Online license to activate the app |

Remote Link App

The Remote Link App allows you to carry out Simpl programs, such as switching off the vacuum or shutting down the machine via DATRON Live. This app provides a simple option to remotely control basic functions of your machine ensuring efficient operation.



Remote Link App

| | |
|----------------------------|------------------------------------|
| Item no. | 0A01389D |
| Software requirement | DATRON next from Release 3.0 |
| Required order information | Machine number, email address |
| Scope of delivery | Online license to activate the app |

App Bundle Basic

The DATRON Live “App Bundle Basic” combines two well-coordinated apps that significantly improve your machine monitoring capabilities. With the combination Cockpit App and the Camera App, you have a comprehensive overview of the operating status and the machining process of your DATRON next software and machine at all times. This cost-efficient package provides real-time monitoring and remote control capabilities. It is ideal for users who want to maximize the efficiency and control of their manufacturing process.



App Bundle Basic

| | |
|----------------------------|------------------------------------|
| Item no. | 0A01390A |
| Software requirement | DATRON next from Release 3.0 |
| Required order information | Machine number, email address |
| Scope of delivery | Online license to activate the app |

DATRON AUTOMATION

The DATRON Automation options offers custom-tailored solutions for volume-oriented production. From automated hardware components to extensive software interfaces – DATRON enhances your machining systems with state-of-the-art technology achieving efficient and flexible manufacturing solutions. These automation solutions optimize your production and can give you a significant competitive edge.

[» Automation Hardware](#)

page 51-53

DATRON

AUTOMATION HARDWARE

DATRON offers a comprehensive selection of automation solutions to expand your milling machine capabilities. This includes automated doors for faster loading and unloading, digital input/output interfaces, and versatile automation modules that connect to the machine safety systems for robotics – these components increase the efficiency, safety and flexibility of your production process.



DATRON

AUTOMATIC DOORS

The DATRON automatic doors automate loading and unloading of your milling machine. The motorized front and side doors are designed for the connection to external automation systems which will significantly accelerate your production process.



Fig. similar

DATRON Machine Systems with Automatic Front Door*
Automatic Drive

| Item no. | 0A03210F | 0A03210G | 0A03300F | 0A03300G | 0A03301F | 0A03301G | 0A01706D |
|----------------|---------------|--------------------------|---------------|--------------------------|------------------|-----------------------------|---------------|
| Opening width | 720 mm | | 1,020 mm | | | | 724 mm |
| Opening height | 738 mm | | 738 mm | | | | 768 mm |
| Opening time | Approx. 1.5 s | | Approx. 1.5 s | | | | Approx. 2.5 s |
| Compatibility | DATRON M8Cube | DATRON M8Cube full table | DATRON MLCube | DATRON MLCube full table | DATRON MLCube LS | DATRON MLCube LS full table | DATRON MXCube |

*Can also be retrofitted in existing machines. Our Customer Care will be happy to consult you.

Automatic Side Door

| Item no. | 0A01706A | 0A01706B | 0A01706C |
|----------------|---------------|---------------|---------------|
| Opening width | 1,185 mm | 1,865 mm | 1,126 mm |
| Opening height | 967 mm | 967 mm | - |
| Opening time | Approx. 3 s | Approx. 3 s | Approx. 7 s |
| Compatibility | DATRON M8Cube | DATRON MLCube | DATRON MXCube |

*Installation service necessary

DATRON

AUTOMATION MODULE & DIGITAL I/O MODULE

The DATRON Automation modules offer comprehensive options for the integration of external hardware, such as robots, in the machine work cell. Digital inputs and outputs along with an expanded programming functions in DATRON next can be used to seamlessly integrate automation systems into the safety circuit of the CNS machining system, ensuring safe and efficient production.

The DATRON digital I/O module expands the control functions of your milling machine. It offers additional interfaces for external hardware, such as automatic clamping devices, and allows for extensive programming in next software to control the devices – ideal for customized automation solutions.



DATRON Automation Module

| Item no. | 0A01705F | 0A01705B | 0A01705C | 0A01705D |
|----------------------|--|---------------|---------------------------|---------------|
| Software requirement | DATRON next+ | | | |
| Compatibility | DATRON neo | DATRON M8Cube | DATRON MLCube, MLCube Pro | DATRON MXCube |
| Scope of delivery | Bus terminals for the machine control cabinet incl. safety DATRON harting connector, standard design (2x12-pin, 2x25-pin) 23 digital inputs and outputs that can be freely programmed in SIMPL by the end user Integration in DATRON safety technology Optional actuation of external automation | | | |

*Installation service necessary

Digital I/O-Modul

| Item no. | 0A01076H | 0A01076F |
|------------------------------|------------|---|
| Voltage inputs and outputs | 24 V DC | 24 V DC |
| Number of inputs and outputs | 8 in/8 out | 32 in/32 out |
| Compatibility | DATRON neo | DATRON M8Cube, MLCube, MLCube Pro, MXCube |

*Installation service necessary

DATRON CONSUMABLES

For trouble-free operation of your milling machine, you need essential consumables, such as coolant, cooling lubricants and DATRON VacuCards. Not only do these components impact machining quality, they also improve machine longevity. Ensuring you have sufficient quantities of materials available at all times prevents interruptions in your production process.

[» Cooling Lubricants](#)

page 55-57

DATRON COOLING LUBRICANTS

From many years of experience, DATRON have identified highly effective cooling lubricants for milling, drilling and engraving applications. The special cooling liquid does not leave any, or minimal residue, making extensive cleaning and degreasing obsolete, saving you time and money.



DATRON

GRACONOL PLUS

DATRON Graconol Plus offers an innovative solution for machining aluminum, plastics and nonferrous metals. With up to 70% renewable raw materials, the Resonate Technology Graconol plus is an ideal alternative to ethanol. For improved machine performance, it provides highly precise, thermally stable and residue-free machining results – without strong odors. Perfect for efficient and safe work production.



Graconol Plus

| Item no. | 0A01006D | 0A01006E | 0A01006F | 0A01006G |
|----------------------|--|----------|----------|----------|
| Contents | 5 l | 20 l | 100 l | 200 l |
| Cooling capacity | Good | | | |
| Lubricating effect | Good | | | |
| Can be suctioned off | ✓ | | | |
| Compatibility | DATRON neo, M8Cube, MLCube, MLCube Pro, MXCube | | | |

*please observe that the evaporation time is higher compared to ethanol.

DATRON

PROCUT 200

DATRON ProCut 200 was specifically designed for machining steel and significantly extends the tool life when machining hard materials. Thanks to its high yield, this MM lubricant reduces wear and in most cases, cleaning the machined parts is not necessary.



ProCut 200

| Item no. | 0069266D | 0069266B | 0069266G |
|----------------------|--|----------|----------|
| Contents | 5 l | 10 l | 200 l |
| Cooling capacity | Low | | |
| Lubricating effect | Very good | | |
| Can be suctioned off | - | | |
| Compatibility | DATRON neo, M8Cube, MLCube, MLCube Pro, MXCube | | |

DATRON CUSTOMER CARE

WE WOULD BE GLAD TO PROVIDE YOU WITH DETAILED INFORMATION:



» via the **DATRON Service Helpdesk**
www.datron.de/helpdesk



» by **E-Mail**
service@datron.de



» by **Telephone**
+49 (0)6151-1419-999



» or at the **Online Shop**
www.datronshop.de



DATRON AG
In den Gänsäckern 5
64367 Mühlthal, Germany

© 2025 DATRON AG. All right reserved.
[liability-exclusion.datron.de](#)