



isel[®]
From Components to Systems

PSF LINEAR GUIDES



MECHANICS



ELECTRONICS



SOFTWARE



SYSTEMS

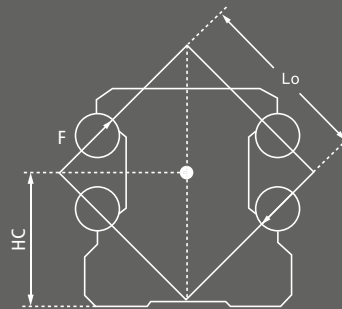


PSF – Profiled rail guide

Linear guides are designed with four raceways in O - arrangement. The precision steel balls transmit introduced forces at a contact angle of 45 degrees (see following sketch). The O-arrangement gives a high torsional rigidity.

To achieve an optimum at load capacity and stiffness the maximum number of steel balls were used, despite the limited space. As a result, high static and dynamic torque loads are possible. The same load ratings apply to all load directions with a compact design.

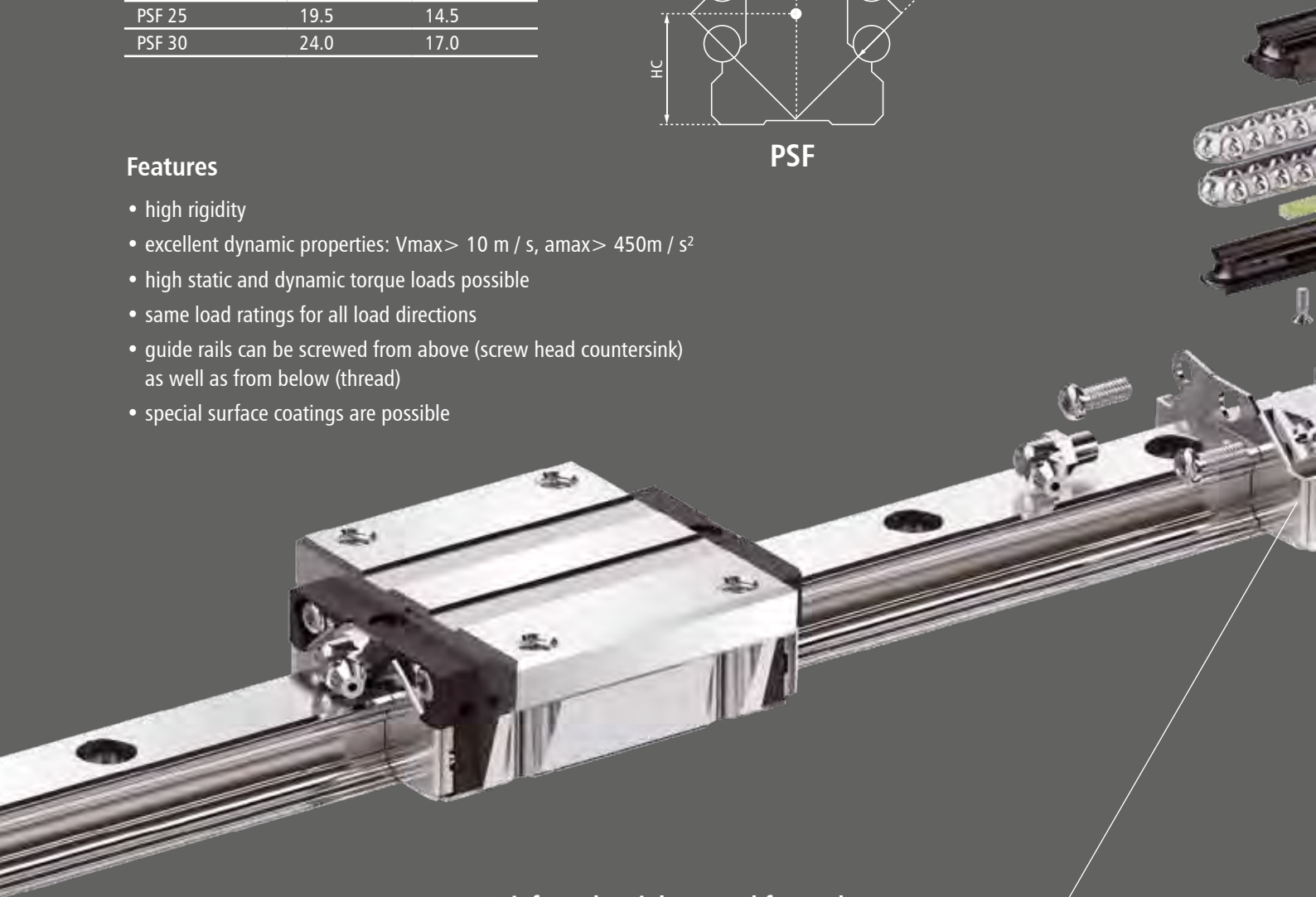
Frame size	Lo [mm]	Hc [mm]
PSF 15	12.4	9.35
PSF 20	16.4	12.5
PSF 25	19.5	14.5
PSF 30	24.0	17.0



PSF

Features

- high rigidity
- excellent dynamic properties: $V_{max} > 10 \text{ m / s}$, $a_{max} > 450 \text{ m / s}^2$
- high static and dynamic torque loads possible
- same load ratings for all load directions
- guide rails can be screwed from above (screw head countersink) as well as from below (thread)
- special surface coatings are possible



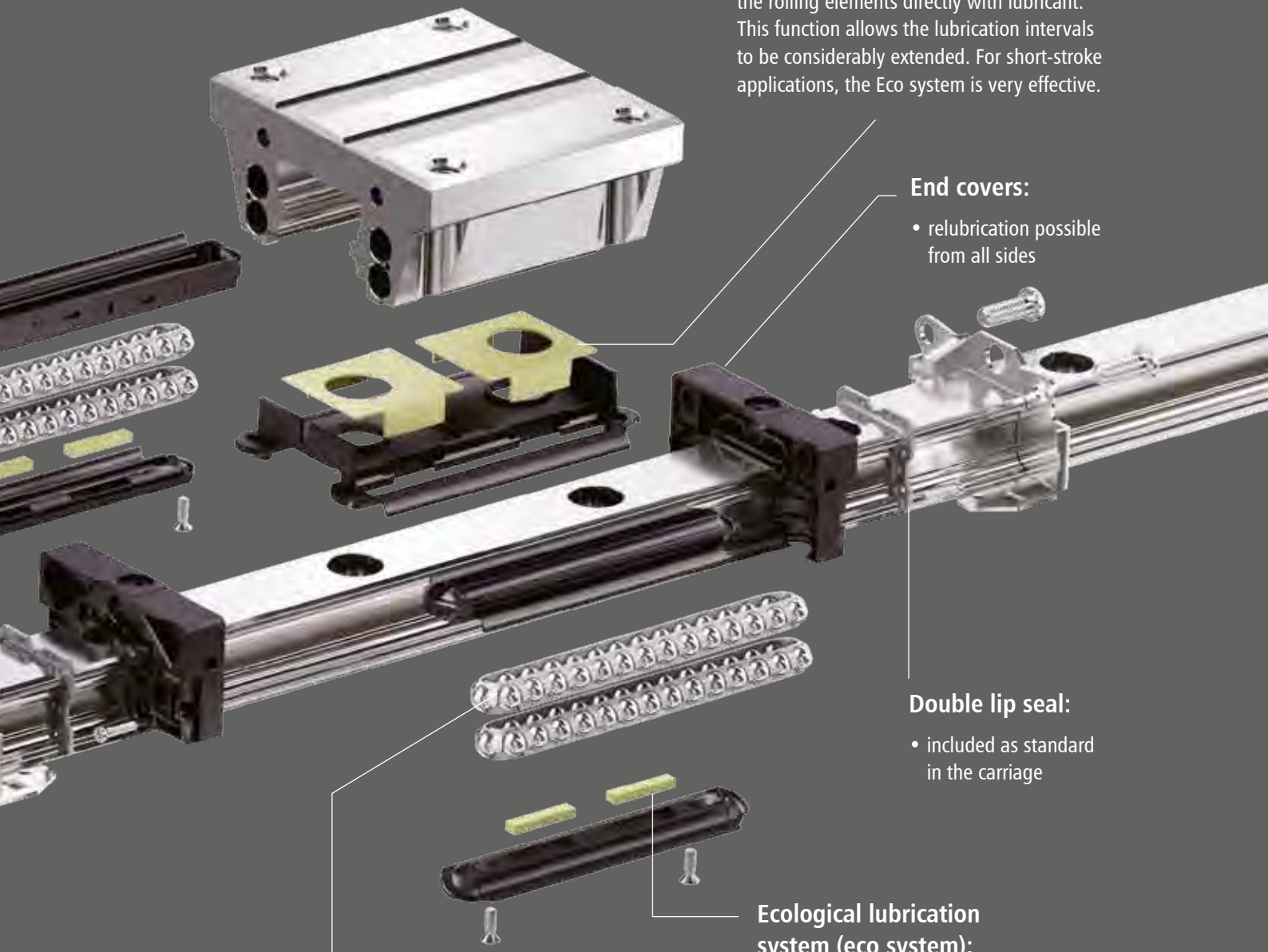
Reinforced stainless steel front plate to increase the carriage characteristics

- standard reinforced steel covers on the front sides
- increasing the stiffness in X-axis direction



Ecological lubrication system (eco system):

The embedded lubrication reservoir supplies the rolling elements directly with lubricant. This function allows the lubrication intervals to be considerably extended. For short-stroke applications, the Eco system is very effective.



End covers:

- relubrication possible from all sides

Double lip seal:

- included as standard in the carriage

Ball Chain:

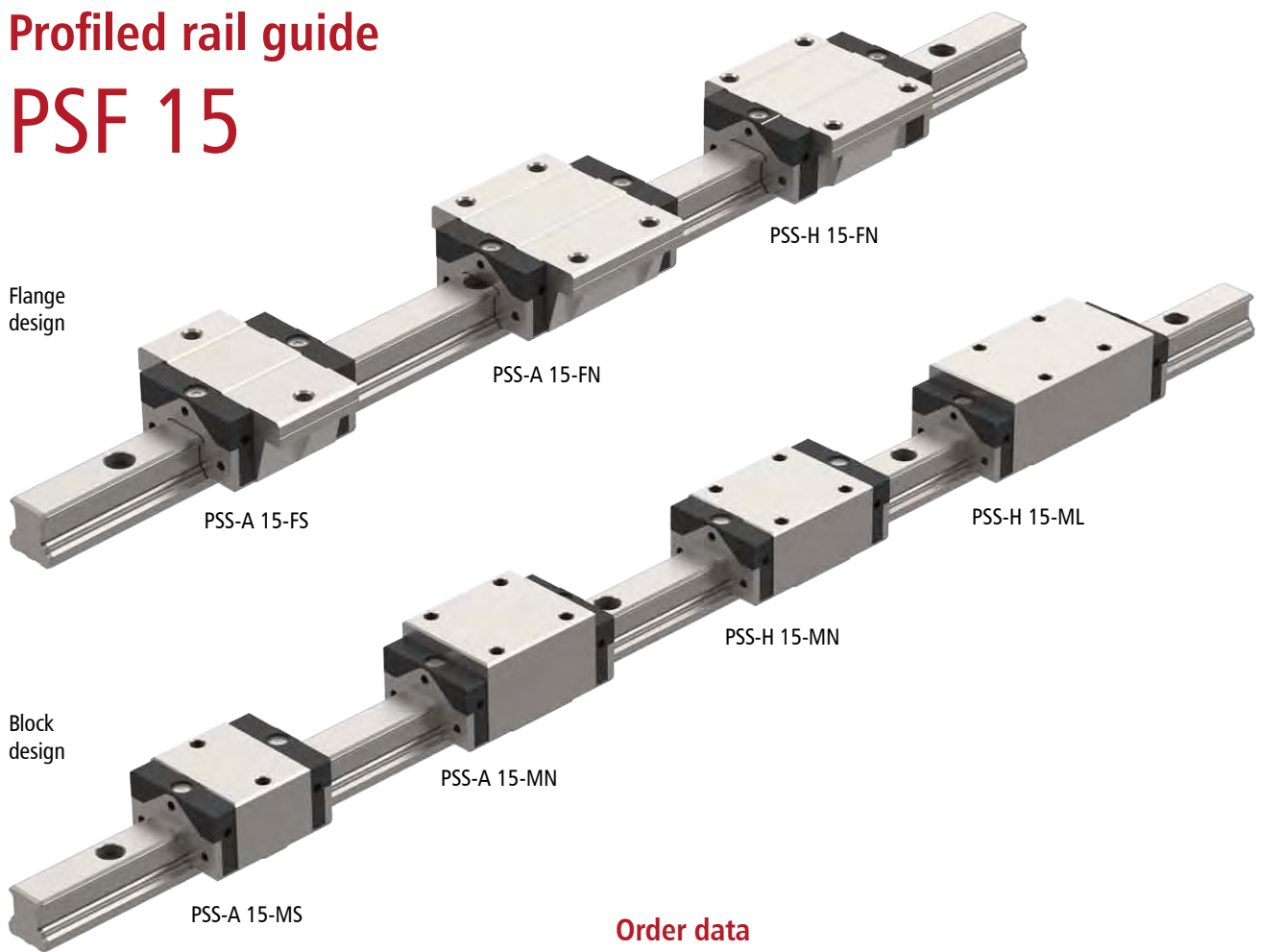
- patented design
- very quiet
- quiet process

Ecological lubrication system (eco system):

The embedded lubrication reservoir supplies the rolling elements directly with lubricant. This function allows the lubrication intervals to be considerably extended. For short-stroke applications, the Eco system is very effective.



Profiled rail guide PSF 15



Order data

Profiled rail guide		item number
PSF 15	4000 mm long	223516 4000

	Guide carriage	item number
flange design	PSS-A 15-FS	223509 2100
	PSS-A 15-FN	223509 2000
	PSS-H 15-FN	223509
block design	PSS-A 15-MS	223509 3100
	PSS-A 15-MN	223509 3000
	PSS-H 15-MN	223509 1000
	PSS-H 15-ML	223509 1100

Carriage description

PSS-X 15-XX

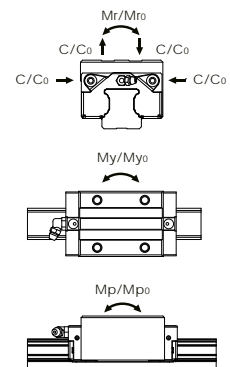
frame size
 A = compact
 H = tall

design
 F = flange
 M = block

carriage length
 S = short
 N = normal
 L = long

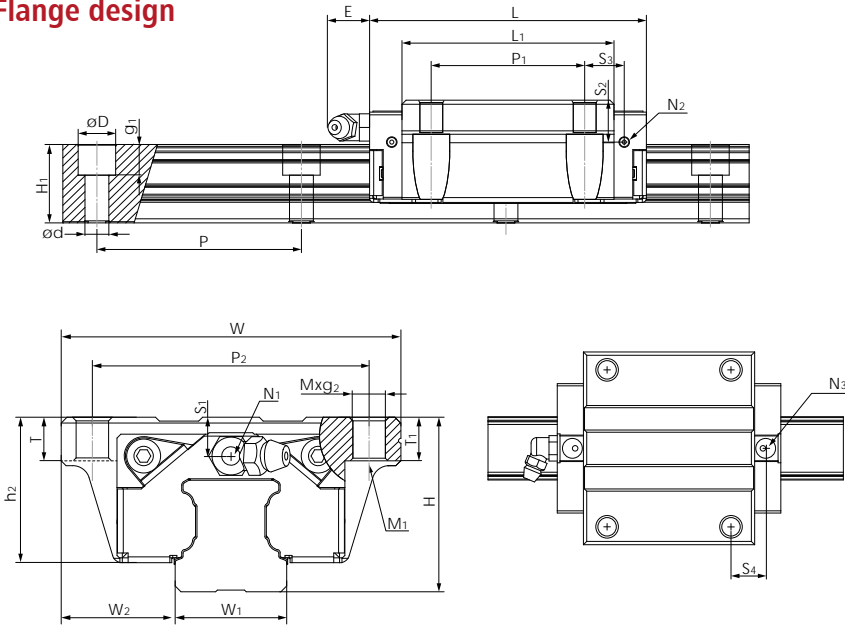
Load data

PSF 15 with guide carriage	Load rating [KN]		Static moments [Nm]			Weights carriage [g] rail [g/m]	
	C	Co	Mr _o	Mp _o	My _o		
PSS-A 15-FS	7.7	12.1	100	50	50	132	1290
PSS-A 15-FN	9.9	17.5	140	105	105	200	1290
PSS-H 15-FN	9.9	17.5	140	105	105	190	1290
PSS-A 15-MS	7.7	12.1	100	50	50	106	1290
PSS-A 15-MN	9.9	17.5	140	105	105	158	1290
PSS-H 15-MN	9.9	17.5	140	105	105	200	1290
PSS-H 15-ML	13.4	26.9	215	235	235	300	1290





Flange design



Rail dimensions [mm]

W ₁	H ₁	P	D x d x g ₁
15	15	60	7.5x4.5x5.3

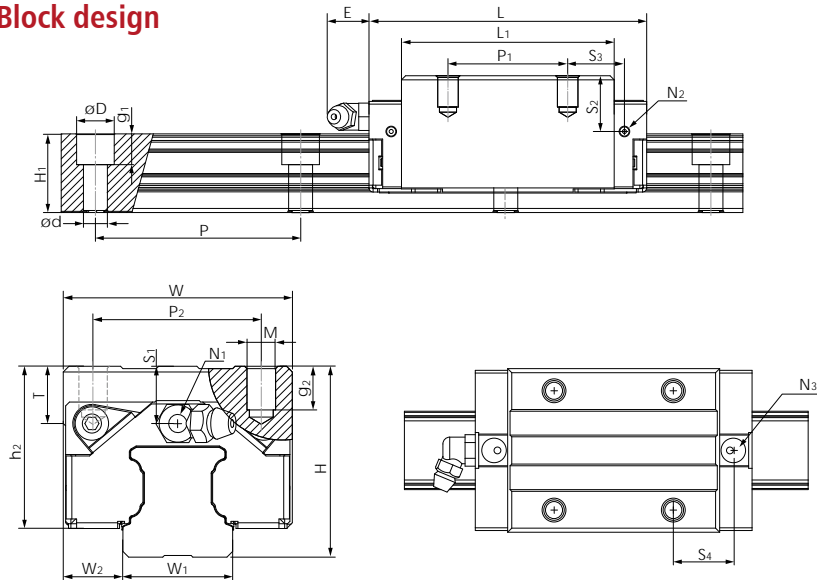
Assembling dimensions [mm]

PSF 15 with	H	W ₂
PSS-A 15-FS	24	18.5
PSS-A 15-FN	24	18.5
PSS-H 15-FN	24	16

Carriage dimensions [mm]

	W	L	L ₁	h ₂	P ₁	P ₂	M x g ₂	M ₁	T	T ₁	N ₁	N ₂	N ₃	E	S ₁	S ₂	S ₃	S ₄
PSS-A 15-FS	52	41.2	26	20.7	-	41	M5x7	M4	7	7	M3x6.5	M3x6	P3	3.5	4.5	7.5	15.6	16.7
PSS-A 15-FN	52	55.5	40.3	20.7	26	41	M5x7	M4	7	7	M3x6.5	M3x6	P3	3.5	4.5	7.5	8.9	10.9
PSS-H 15-FN	47	55.5	40.3	20.7	30	38	M5x7	M4	7	7	M3x6.5	M3x6	P3	3.5	4.5	7.5	7.8	8.9

Block design



Rail dimensions [mm]

W ₁	H ₁	P	D x d x g ₁
15	15	60	7.5x4.5x5.3

Assembling dimensions [mm]

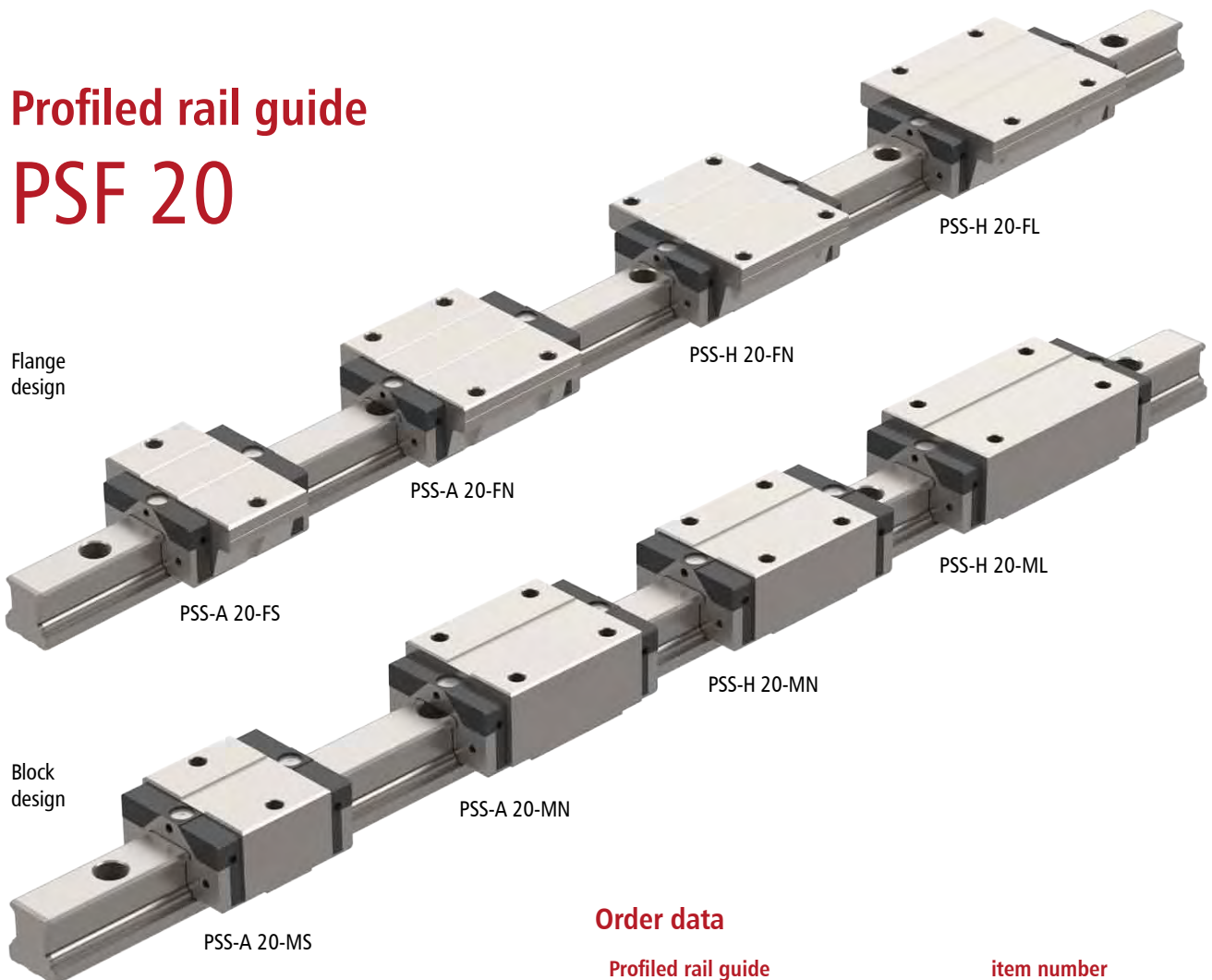
PSF 15 with	H	W ₂
PSS-A 15-MS	24	9,5
PSS-A 15-MN	24	9,5
PSS-H 15-MN	28	9,5
PSS-H 15-ML	28	9,5

Carriage dimensions [mm]

	W	L	L ₁	h ₂	P ₁	P ₂	M x g ₂	M ₁	T	T ₁	N ₁	N ₂	N ₃	E	S ₁	S ₂	S ₃	S ₄
PSS-A 15-MS	34	41.2	26	20.7	-	26	M4x7	-	6	-	M3x6.5	M3x6	P3	3.5	4.5	7.5	15.6	16.7
PSS-A 15-MN	34	55.5	40.3	20.7	26	26	M4x7	-	6	-	M3x6.5	M3x6	P3	3.5	4.5	7.5	9.8	10.9
PSS-H 15-MN	34	55.5	40.3	24.7	26	26	M4x7	-	6	-	M3x6.5	M3x6	P3	3.5	8.5	11.5	9.8	10.9
PSS-H 15-ML	34	76.2	61	24.7	26	26	M4x7	-	6	-	M3x6.5	M3x6	P3	3.5	8.5	11.5	20.1	21.2



Profiled rail guide PSF 20



Flange design

Block design

Carriage description

PSS-X 20-XX

frame size

A = compact
H = tall

design

F = flange
M = block

carriage length

S = short
N = normal
L = long

Order data

Profiled rail guide

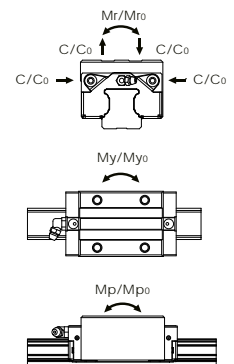
Profiled rail guide	item number
PSF 20 4000 mm long	223521 4000

Guide carriage

Guide carriage	item number	
flange design	PSS-A 20-FS	223510 2100
	PSS-A 20-FN	223510 2000
	PSS-H 20-FN	223510
	PSS-H 20-FL	223510 0100
block design	PSS-A 20-MS	223510 3100
	PSS-A 20-MN	223510 3000
	PSS-H 20-MN	223510 1000
	PSS-H 20-ML	223510 1100

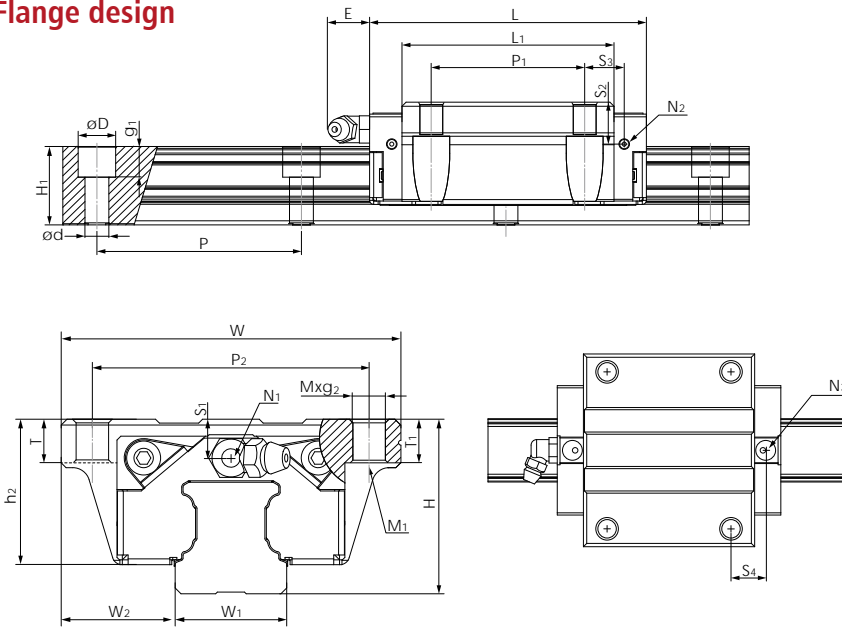
Load data

PSF 20 with guide carriage	Load rating [kN]		Static moments [Nm]			Weights carriage [g] rail [g/m]	
	C	C ₀	M _{r0}	M _{p0}	M _{y0}		
PSS-A 20-FS	12.5	19.3	205	100	100	210	2280
PSS-A 20-FN	17.1	30.0	325	230	230	336	2280
PSS-H 20-FN	17.1	30.0	325	230	230	396	2280
PSS-H 20-FL	20.4	38.5	415	390	390	504	2280
PSS-A 20-MS	12.5	19.3	205	100	100	170	2280
PSS-A 20-MN	17.1	30.0	325	230	230	266	2280
PSS-H 20-MN	17.1	30.0	325	230	230	318	2280
PSS-H 20-ML	20.4	38.5	415	390	390	400	2280





Flange design



Rail dimensions [mm]

W ₁	H ₁	P	D x d x g ₁
20	20	60	9.5x6x8.5

Assembling dimensions [mm]

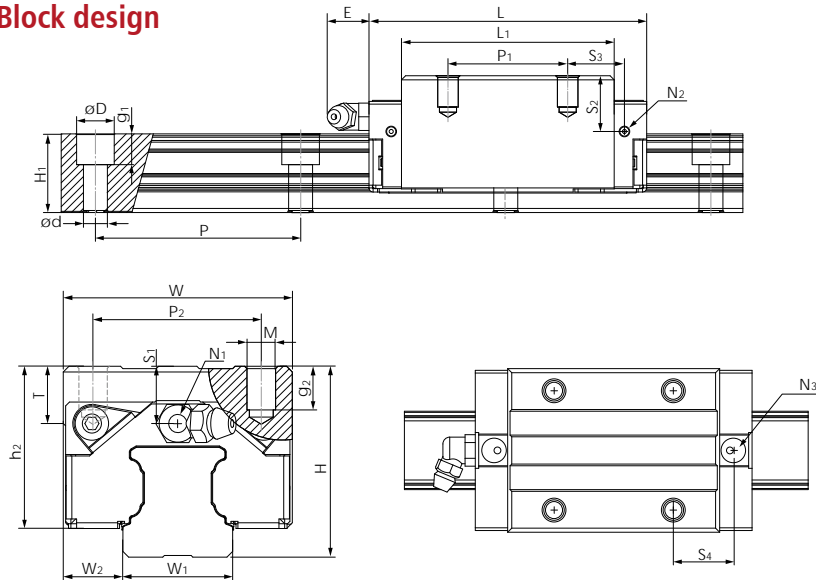
PSF 20 with H W₂

PSS-A 20-FS	28	19.5
PSS-A 20-FN	28	19.5
PSS-H 20-FN	30	21.5
PSS-H 20-FL	30	21.5

Carriage dimensions [mm]

	W	L	L ₁	h ₂	P ₁	P ₂	M x g ₂	M ₁	T	T ₁	N ₁	N ₂	N ₃	E	S ₁	S ₂	S ₃	S ₄
PSS-A 20-FS	59	49.2	32.2	23	-	49	M6x10	M5	10	10	M3x7.5	M3x5.5	P4	10	4	7.4	19.1	19.8
PSS-A 20-FN	59	69	52	23	32	49	M6x10	M5	10	10	M3x7.5	M3x5.5	P4	10	4	7.4	13	13.7
PSS-H 20-FN	63	69	52	25	40	53	M6x10	M5	10	10	M3x7.5	M3x5.5	P4	10	6	9.4	9	9.7
PSS-H 20-FL	63	87.2	70.2	25	40	53	M6x7	M5	7	7	M3x7.5	M3x5.5	P4	10	6	9.4	18.1	18.8

Block design



Rail dimensions [mm]

W ₁	H ₁	P	D x d x g ₁
20	20	60	9.5x6x8.5

Assembling dimensions [mm]

PSF 20 with H W₂

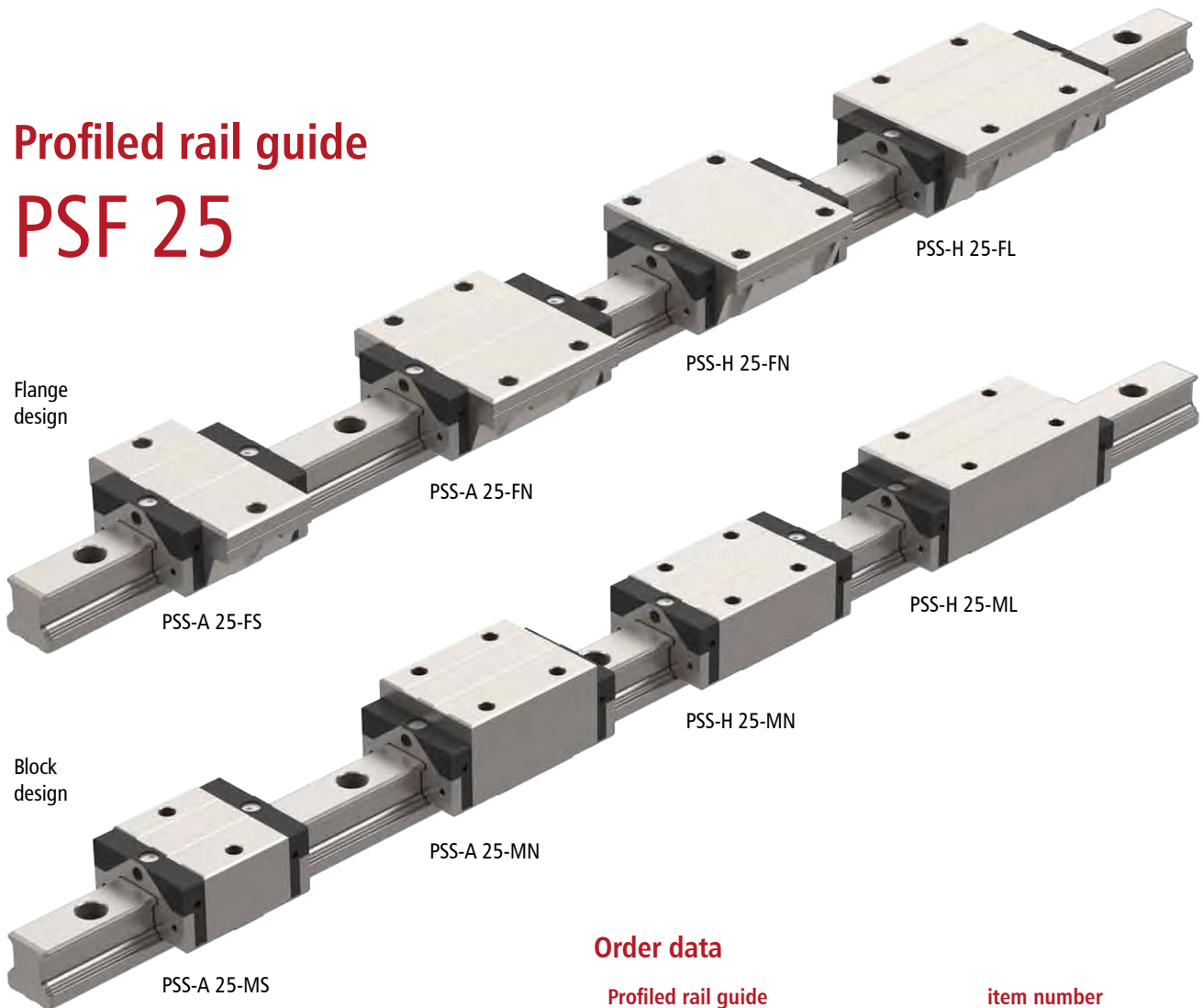
PSS-A 20-MS	28	11
PSS-A 20-MN	28	11
PSS-H 20-MN	30	12
PSS-H 20-ML	30	12

Carriage dimensions [mm]

	W	L	L ₁	h ₂	P ₁	P ₂	M x g ₂	M ₁	T	T ₁	N ₁	N ₂	N ₃	E	S ₁	S ₂	S ₃	S ₄
PSS-A 20-MS	42	49.2	32.2	23	-	32	M5x7	-	8	-	M3x7.5	M3x5.5	P4	10	4	7.4	19.1	19.8
PSS-A 20-MN	42	69	52	23	32	32	M5x7	-	8	-	M3x7.5	M3x5.5	P4	10	4	7.4	13	13.7
PSS-H 20-MN	44	69	52	25	36	32	M5x8.5	-	8	-	M3x7.5	M3x5.5	P4	10	6	9.4	11	11.7
PSS-H 20-ML	44	87.2	70.2	25	50	32	M5x8.5	-	8	-	M3x7.5	M3x5.5	P4	10	6	9.4	13.1	13.8



Profiled rail guide PSF 25



Flange design

Block design

Carriage description

PSS-X 25-XX

frame size

A = compact
H = tall

design

F = flange
M = block

carriage length

S = short
N = normal
L = long

Order data

Profiled rail guide

item number

PSF 25	4000 mm long	223526 4000
--------	--------------	-------------

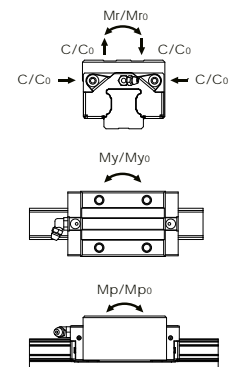
Guide carriage

item number

flange design	PSS-A 25-FS	223511 2100
	PSS-A 25-FN	223511 2000
	PSS-H 25-FN	223511
	PSS-H 25-FL	223511 0100
block design	PSS-A 25-MS	223511 3100
	PSS-A 25-MN	223511 3000
	PSS-H 25-MN	223511 1000
	PSS-H 25-ML	223511 1100

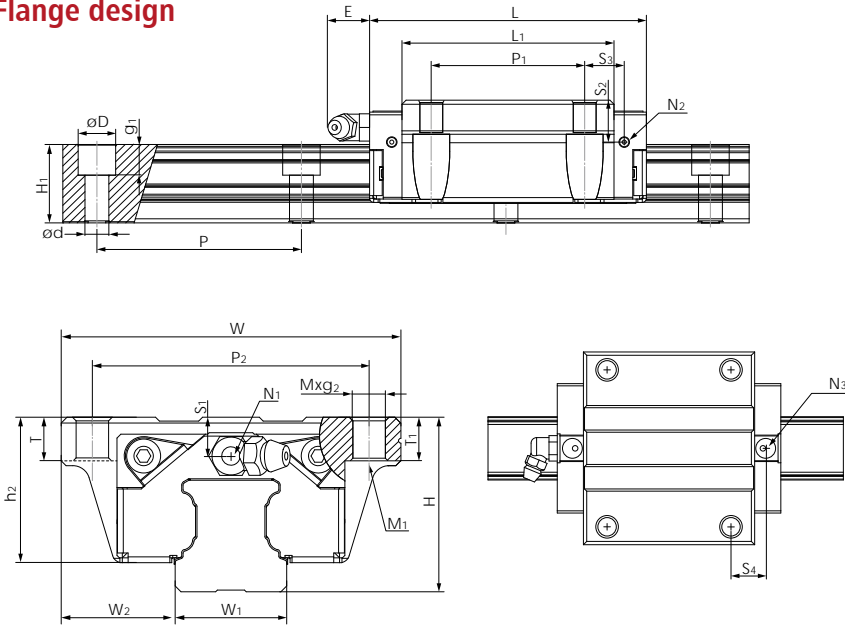
Load data

PSF 25 with guide carriage	Load rating [kN]		Static moments [Nm]			Weights carriage [g] rail [g/m]	
	C	C ₀	M _{r0}	M _{p0}	M _{y0}		
PSS-A 25-FS	18.2	27.3	350	160	160	345	3020
PSS-A 25-FN	24.8	42.5	540	385	385	524	3020
PSS-H 25-FN	24.8	42.5	540	385	385	626	3020
PSS-H 25-FL	30.7	57.5	735	710	710	870	3020
PSS-A 25-MS	18.2	27.3	350	160	160	300	3020
PSS-A 25-MN	24.8	42.5	540	385	385	420	3020
PSS-H 25-MN	24.8	42.5	540	385	385	578	3020
PSS-H 25-ML	30.7	57.7	735	710	710	685	3020





Flange design



Rail dimensions [mm]

W ₁	H ₁	P	D x d x g ₁
23	23	60	11x7x9

Assembling dimensions [mm]

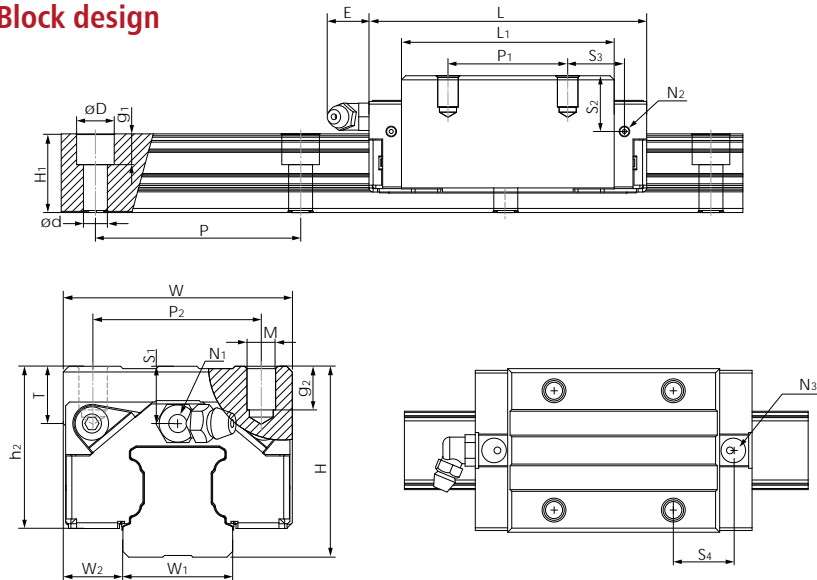
PSF 25 with H W₂

PSS-A 25-FS	33	25
PSS-A 25-FN	33	25
PSS-H 25-FN	36	23,5
PSS-H 25-FL	36	23,5

Carriage dimensions [mm]

	W	L	L ₁	h ₂	P ₁	P ₂	M x g ₂	M ₁	T	T ₁	N ₁	N ₂	N ₃	E	S ₁	S ₂	S ₃	S ₄
PSS-A 25-FS	73	57.4	38.4	27	-	60	M8x12	M6	12	12	M6x7.5	M3x6.5	P4	12	5	9.3	22.2	23.2
PSS-A 25-FN	73	81.2	62.2	27	35	60	M8x12	M6	12	12	M6x7.5	M3x6.5	P4	12	5	9.3	16.6	17.6
PSS-H 25-FN	70	81.2	62.2	30	45	57	M8x12	M6	12	12	M6x7.5	M3x6.5	P4	12	8	12.3	11.6	12.6
PSS-H 25-FL	70	105	86	30	45	57	M8x10	M6	10	10	M6x7.5	M3x6.5	P4	12	8	12.3	23.5	24.5

Block design



Rail dimensions [mm]

W ₁	H ₁	P	D x d x g ₁
23	23	60	11x7x9

Assembling dimensions [mm]

PSF 25 with H W₂

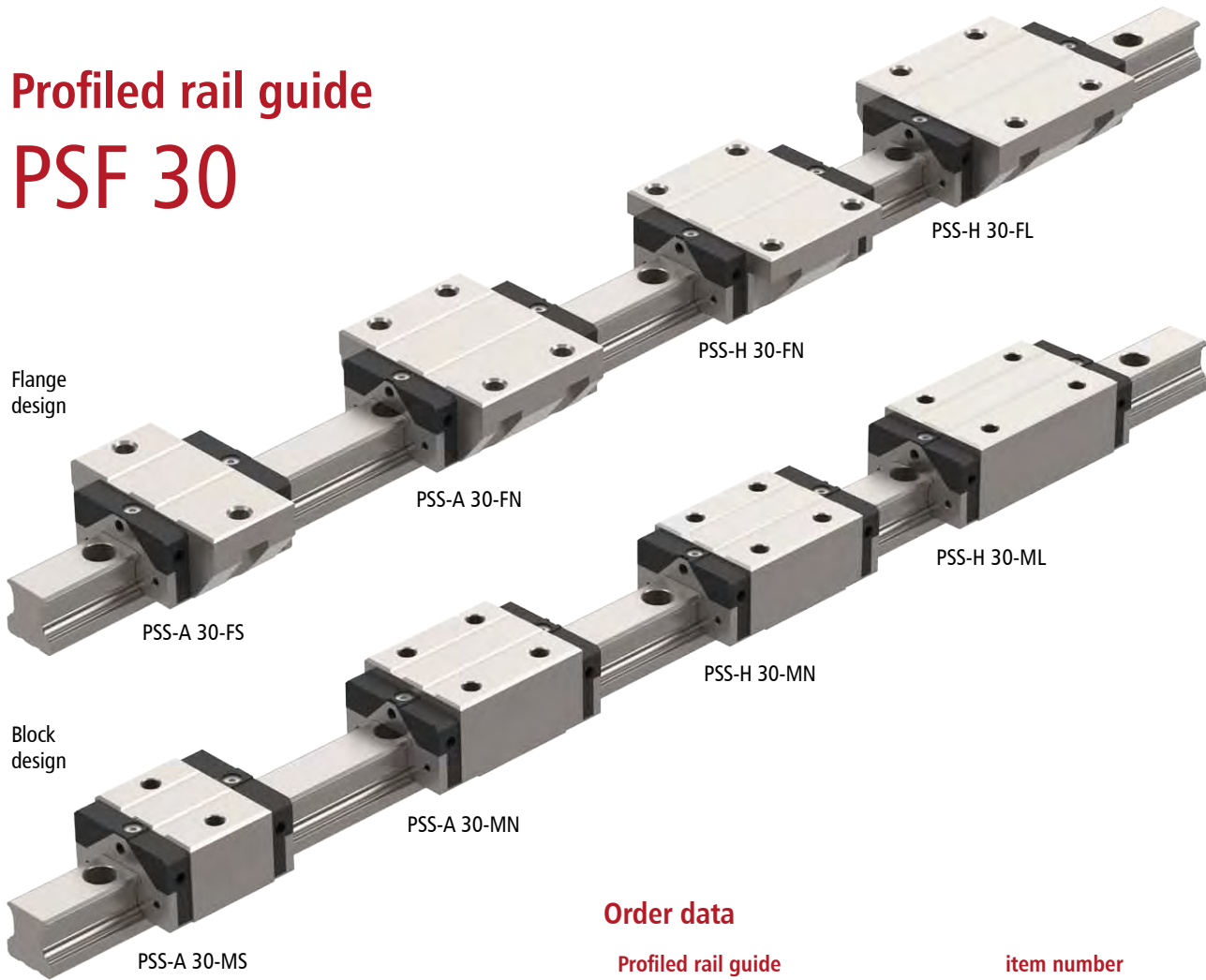
PSS-A 25-MS	33	12.5
PSS-A 25-MN	33	12.5
PSS-H 25-MN	40	12.5
PSS-H 25-ML	40	12.5

Carriage dimensions [mm]

	W	L	L ₁	h ₂	P ₁	P ₂	M x g ₂	M ₁	T	T ₁	N ₁	N ₂	N ₃	E	S ₁	S ₂	S ₃	S ₄
PSS-A 25-MS	48	57.4	38.4	27	-	35	M6x9	-	8	-	M6x7.5	M3x6.5	P4	12	5	9.3	22.2	23.2
PSS-A 25-MN	48	81.2	62.2	27	35	35	M6x9	-	8	-	M6x7.5	M3x6.5	P4	12	5	9.3	16.6	17.6
PSS-H 25-MN	48	81.2	62.2	34	35	35	M6x9	-	12	-	M6x7.5	M3x6.5	P4	12	12	16.3	16.6	17.6
PSS-H 25-ML	48	105	86	34	50	35	M6x9	-	12	-	M6x7.5	M3x6.5	P4	12	12	16.3	21	22



Profiled rail guide PSF 30



Order data

Profiled rail guide		item number
PSF 30	4000 mm long	223531 4000

Guide carriage		item number
Flansch- ausführung	PSS-A 30-FS	223512 2100
	PSS-A 30-FN	223512 2000
	PSS-H 30-FN	223512
	PSS-H 30-FL	223512 0100
Block- ausführung	PSS-A 30-MS	223512 3100
	PSS-A 30-MN	223512 3000
	PSS-H 30-MN	223512 1000
	PSS-H 30-ML	223512 1100

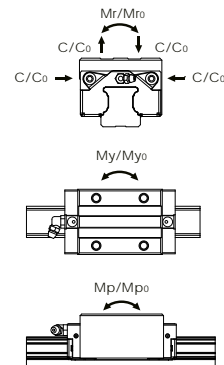
Carriage description

PSS-X 30-XX

frame size	design	carriage length
A = compact	F = flange	S = short
H = tall	M = block	N = normal
		L = long

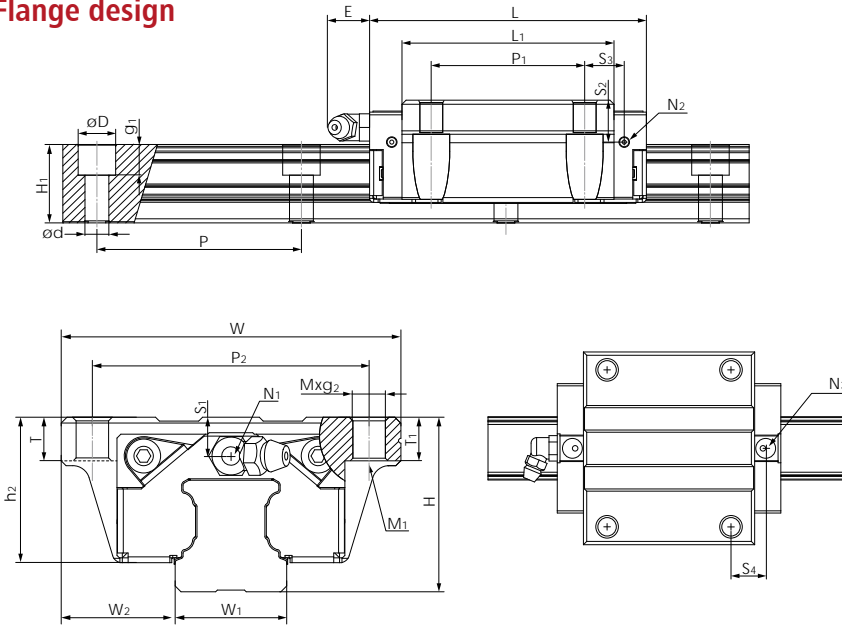
Load data

PSF 30 with guide carriage	Load rating [KN]		Static moments [Nm]			Weights carriage [g] rail [g/m]	
	C	C ₀	Mr ₀	Mp ₀	My ₀		
PSS-A 30-FS	23.3	33.1	520	230	230	750	4380
PSS-A 30-FN	32.8	53.7	845	565	565	1200	4380
PSS-H 30-FN	32.8	53.7	845	565	565	1110	4380
PSS-H 30-FL	39.6	70.2	1105	950	950	1385	4380
PSS-A 30-MS	23.3	33.1	520	230	230	560	4380
PSS-A 30-MN	32.8	53.7	845	565	565	800	4380
PSS-H 30-MN	32.8	53.7	845	565	565	896	4380
PSS-H 30-ML	39.6	70.2	1105	950	950	1150	4380





Flange design



Rail dimensions [mm]

W ₁	H ₁	P	D x d x g ₁
28	27	80	14x9x12

Assembling dimensions [mm]

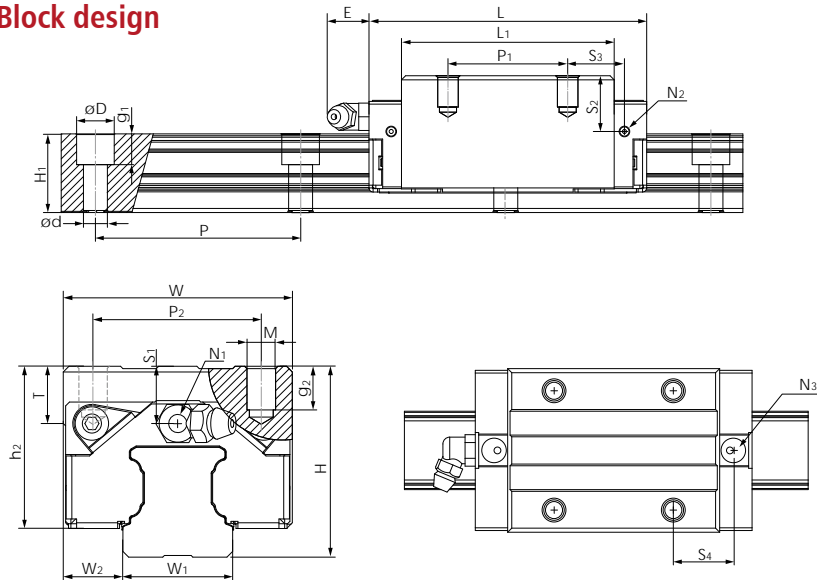
PSF 30 with H W₂

PSS-A 30-FS	42	31
PSS-A 30-FN	42	31
PSS-H 30-FN	42	31
PSS-H 30-FL	42	31

Carriage dimensions [mm]

	W	L	L ₁	h ₂	P ₁	P ₂	M x g ₂	M ₁	T	T ₁	N ₁	N ₂	N ₃	E	S ₁	S ₂	S ₃	S ₄
PSS-A 30-FS	90	68	44	35.2	-	72	M10x12	M8	12	12	M6x8.5	M6x5	P5	12	7.5	12	27	26.8
PSS-A 30-FN	90	95.5	71.5	35.2	40	72	M10x12	M8	12	12	M6x8.5	M6x5	P5	12	7.5	12	20.8	20.5
PSS-H 30-FN	90	95.5	71.5	35.2	52	72	M10x12	M8	12	12	M6x8.5	M6x5	P5	12	7.5	12	14.8	14.5
PSS-H 30-FL	90	118	94	35.2	52	72	M10x12	M8	12	12	M6x8.5	M6x5	P5	12	7.5	12	25.7	25.8

Block design



Rail dimensions [mm]

W ₁	H ₁	P	D x d x g ₁
28	27	80	14x9x12

Assembling dimensions [mm]

PSF 30 with H W₂

PSS-A 30-MS	42	16
PSS-A 30-MN	42	16
PSS-H 30-MN	45	16
PSS-H 30-ML	45.2	16

Carriage dimensions [mm]

	W	L	L ₁	h ₂	P ₁	P ₂	M x g ₂	M ₁	T	T ₁	N ₁	N ₂	N ₃	E	S ₁	S ₂	S ₃	S ₄
PSS-A 30-MS	60	68	44	35.2	-	40	M8x10	-	12	-	M6x8.5	M6x5	P5	12	7.5	12	27	26.7
PSS-A 30-MN	60	95.5	71.5	35.2	40	40	M8x10	-	12	-	M6x8.5	M6x5	P5	12	7.5	12	20.8	20.5
PSS-H 30-MN	60	95.5	71.5	38.4	40	40	M8x12	-	12	-	M6x8.5	M6x5	P5	12	10.5	15	20.8	20.5
PSS-H 30-ML	60	118	94	38.4	60	40	M8x12	-	12	-	M6x8.5	M6x5	P5	12	10.5	15	21.7	21.8

iselGermanyAG

Bürgermeister-Ebert-Straße 40
D-36124 Eichenzell
Tel: +49 (0) 66 59 / 981 - 700
E-Mail: automation@isel.com

www.isel.com

Technical specifications subject to change.

