

# **isel**<sup>®</sup> *From Components to Systems*



MECHANICS



ELECTRONICS



SOFTWARE



SYSTEMS



DISPLAY



LIFESTYLE

## **EuroScooter – OWNER'S MANUAL**



*...for best quality and price...*

## TABLE OF CONTENTS

Conformity.....	2
Introduction.....	2
Scope of delivery.....	3
Purpose of use.....	3
General safety instructions, warnings and cautions.....	3
Safety and traffic regulations.....	4
Vehicle load capacity.....	4
Maintenance / general information.....	4
Delivery check.....	4
Personalized settings.....	4
Seat.....	4
Handelbar position.....	5
Operation.....	5
Brake.....	5
Instrument Cluster and lighting.....	5
Brakes.....	6
Handelbar Basket.....	6
Electronic.....	6
Charging the Battery.....	6
Battery replacement.....	6
Cleaning.....	7
Inspection / Maintenance.....	7
Lubricant specification.....	7
Brake System.....	7
Maintenance instructions.....	7
Disposal of the scooter.....	7
Transfer and sale to a new owner.....	7
Warranty.....	7
Warning!.....	7
Technical specification.....	8

### isel Germany AG

Bürgermeister-Ebert-Straße 40  
D-36124 Eichenzell

AG: Fulda HRB: 5468

StNr: 1822507223 Ust-IdentNr: DE198999122

Board of Directors: Hugo Isert , Werner Kister

Member of the board: Gunter Zumpf , Lars Rohrlack-Soth , Christoph Stark

### Conformity



isel Germany AG declares that the EuroScooter and it's instructions are made in order of the CE directives

### Introduction

Thank you for choosing the isel EuroScooter. We recommend that you take some time to get to know your EuroScooter by reading this manual. These instructions will provide you with important and necessary information about the use of the Euro Scooter. Always follow the instructions in accordance with these instructions. For people with low mental abilities and physical limitations, all safety and use aspects must be made understandable by a supervisor or a guardian. Children and juveniles under the age of 16 are not allowed to use the EuroScooter! Speed and driving behavior must be adapted to the environmental conditions. Participation in German Road Traffic Act (StVO) and Road Traffic Licensing Act (StVZO) is excluded.

## Scope of delivery

- EuroScooter (packed)
- User's manual and operating instructions
- Charger
- Battery pack (number depends on model and options)

## Purpose of use

The EuroScooter was designed for conventional use on a flat solid base. When using the EuroScooter is always necessary to take caution of the behavior of motorized tricycles. Always follow the safety instructions which described in this manual. The local valid traffic regulations must be followed without exceptions. Any other use, including any damage, which may arise there from, does not fall under the responsibility of the manufacturer. The EuroScooter is designed for internal transport of goods and can be used by one person only. Do to its small dimensions the EuroScooter can drive thru normal doors and fits in elevators.

## General Safety instructions, warnings and cautions

**Important notice:** Read the safety instructions first before you use the EuroScooter!

- The EuroScooter is suitable for the transport of one person only and transport boxes. Material and transport boxes must be secured all the time to avoid sliding off or tipping over.
- If you need to replace damaged or worn-out parts, use only original parts "made by isel".
- Before using the EuroScooter practice operating it on a level and restricted area. You should intensively practice using the accelerating and brakes in a straight line and in curves. Get used to the forward and reverse gear of the electric motor. Always be aware of reaction of the electro motor when turn on the power and using the throttle.
- Attention: Watch out that you do not accidentally turn on the reverse gear.
- Ensure that the EuroScooter is in good and functional conditions each time you use it. Check if the brakes and lighting are working properly and if there is enough air in the tires. (2.5 to 3 bar / 36,0 to 43,5 psi)
- Check regularly that the wheels, handlebars and saddle are properly installed and all screw connections are tight.
- While driving there may be a very small gap between the handlebar and objects. Avoid the risk to trap your fingers or extremities.
- Only drive with narrow leg clothing.
- Pay attention to outstanding, fixed or loose parts, on and in the Euro Scooter. This can damage the Environment and the scooter.
- Use the parking brake when parking the Euro Scooter.
- Lock the drive wheel with the parking brake during getting on and off the scooter. That will provide the scooter from rolling away.
- When you leave the parked scooter unattended, make sure you turned of the power and locked the scooter to avoid unintended use and / or theft.
- DO NOT USE a high pressure cleaner, a steam cleaner or a water hose to clean the scooter
- For cleaning the EuroScooter always use a light moist but never soppy towel and never use aggressive detergents.
- Do not expose the scooter to direct sunlight for a longer period of time. Parts can be hot and that can cause skin irritation or burns.
- Operate the EuroScooter only on a flat solid base. Soft, smooth or rough terrain increases the risk of dangerous situations.
- When roads are slippery with rain, mud, ice or snow, reduce your speed and drive carefully.
- Ensure when driving an inclined slope or at inappropriate speed that the vehicle does not tilt.
- Avoid slopes of more than 15°, because forward or reverse driving can be dangerous.
- Assume that the braking distance on a slope with increased load can be longer as on a horizontal base.
- When driving downhill or thru a tunnel pay attention to your speed.
- Drive carefully along curbs because uneven pavement increases the risk of tipping.
- When making a U turn on a inclined road pay attention the there is a risk of tilt
- When using the pavement, always drive up or down by using a driveway. If there is not a driveway, drive straight up and down on the kerb with reasonable speed.
- The maximum height of driving up or down a kerb is 10 cm.
- When transporting the EuroScooter in a motor vehicle make sure that, the EuroScooter is secured to prevent it from sliding or tipping over. **NOTE:** It is not allowed that the scooter is used as a seat in a vehicle. Always transfer to the vehicle seat and use the vehicle-installed restraint system.

## Safety and traffic regulations

- If you are under influence of any substance that may affect the ability to drive, do not drive.
- You must have sufficient vision to drive safely in every possible situation.
- Always follow the traffic regulations on public streets.
- Make sure that you will always be noticed and visible to other traffic and pedestrians.
- STOP and turn off the electrical system, when using you cell phone
- Drivers must be at least 16 years of age to drive a EuroScooter.

## Vehicle load capacity

- The permissible full load of 250 kg/ 550 lb may not be exceeded.  
See details in the technical data table on page no. 8.  
Among the permitted load we mean the total load, including the driver, the load which is transported in the basket and or on the transport surface.
- The basket has a maximum load capacity of 10kg / 22lb, which should not be exceeded.  
It is not permitted to transport persons or animals in the basket!
- Note that a filled basket with significantly influence the driving behavior.  
No objects must be transported on the handlebars, which limits driving of the Euro Scooter.
- DO NOT transport any person on the loading surface of the EuroScooter.

## Maintenance / general information

The replacement, repair of damaged or broken parts that concern the frame, fork, lights, brakes or drive must always be performed by isel professionals. Non-compliance with the above verified operating instructions resp. one single item will consequently result into immediate expiration of complete warranty and/or guarantee claims. Only original parts must be used for replacing parts relevant to safety!

## Delivery check

Check the contents of the package for completeness and damage. If any discrepancies or damage are detected, contact our customer service department.

## Personalized settings

Before using the EuroScooter for the first time it must be adjusted for your body size. This is the only way to ensure that the seat and the handlebar gives you the correct posture. If an optimum setting for the driver is not possible as described, please contact isel for a suitable solution. The brake is provided already calibrated with the braking torque requested upon ordering. Only isel professionals is allowed to carry out repair and adjustment work on the operating brake system.

## Seat

If necessary adjust the seat as described:

1. Loosen the four screws on the bottom of the seat.
2. Sit on the seat and slide the seat forward or backward until you reached the right position between you and the handlebar.
3. Tighten the four screws on the bottom of the seat.



### Handlebar position

The handlebar position can be changed by loosening the handlebar clamp. After aligning the handlebar position, make sure that the screws of the handlebar clamp are tightened. NOTE: The clamping of the handlebar clamp must be done on the grooved area.

### Operation

Please fully charge the battery pack of the Euro Scooter when you use the scooter for the first time. (see charging the battery on page 6)  
NOTE: The scooter has 3 different speed steps in the direction of travel and one for reverse. To collect driving experience, we recommend that the first driving maneuvers should be done with or without loaded crates in the environment of use. Adapt your driving style and speed and take steps to ensure even weight distribution. When driving into a curve with excessive and inappropriate speed, be aware that the scooter may tip.



### Brakes

The EuroScooter has one brake that controls the front wheel. The brake is controlled by using the hand lever on the left grip. When parking the EuroScooter and to prevent the scooter from rolling away, always use the parking brake. The brake is a hydraulically operated single circuit brake system. To ensure a proper functioning of the brake system, check the system on a regular basis to prevent leaks or malfunction.



### Instrument cluster and lighting

The function display is key-controlled and has the following switching possibilities.

- 1 - OFF
- 2 - Scooter - ON
- 3 - Scooter and light ON

The function display shows the power status of the battery as well as the LED light control.





## Brake

The Hydraulic brake is the only brake of the Euro Scooter and has to be checked each time before you use the scooter. The parking-brake is operated by clamping the brake lever in the disengaged position. The parking brake can be loosen by pulling the brake lever and lifting the clamp.



## Handlebar basket

The Euro Scooter is equipped with a handlebar basket. Hang the basket on the front part of the handlebar. The basket has a maximum load capacity of 10kg / 22lb which should not be exceeded. Note that a filled basket with significantly influence the driving behavior.



## Electronic

The battery status display shows the charge status. If the display is in the green range, the battery is sufficiently charged. If the display is in the red range, the scooter can only be used for a short distance and the battery should be charged as soon as possible. If you do not use the scooter for longer timer the battery should be recharged. If you do not use the scooter turn of the electronic. Protect the electronics and the battery against water and or Frost, otherwise this may result in malfunction of the scooter.

## Charging the Battery

**Attention!!!:** Always connect the power adapter to your EuroScooter first **BEFORE** you plug it into the power outlet. For an optimum state and capacity of the battery we recommend charging the battery at room temperature.

### To charge the battery:

1. Turn off the scooter and remove key
2. On the lower back side of the scooter, open the cover of the charging jack.
3. Connect the battery charger to the scooter.
4. Plug the main plug of the battery charger into the main socket (230 V).
5. Charging time is about 4 to 5 hours.
6. After the battery fully charged the charger automatically switches to trickle charging.
7. Once charging is complete, disconnect the mains plug and disconnect the battery charger from the scooter.
8. Close the cover of the charging jack.



At the start of the charging process the charger indicate the actual voltage. The status LED's on the charger lights alternating red P-Pulse and green N-Pulse



Charging process is finished.



## Battery replacement

If the rechargeable battery is exhausted after several years, please contact your dealer or isel for an appropriate exchange. Battery replacement must always be performed by a certified dealer or must be done by isel professionals. After the battery is replaced, charging the battery is first required before use the scooter.

## Cleaning

For cleaning the EuroScooter DO NOT USE a high pressure cleaner, a steam cleaner or a water hose to clean the scooter. Always use a light moist but never sappy towel. Do not use aggressive cleaning agents, because they may attack the surface of the material. The wheels can be cleaned with a damp brush with plastic bristles (do not use a wire brush).

## Inspection Maintenance

Every 3 months or after 200 hours of operation, your EuroScooter must be inspected. Check the brakes, lights, wheels and tread depth of tires (min. 1 mm / 0,04 inch). Worn tires or defective parts must be replaced. Also check the function of the parking brake. With a tightening parking brake the scooter with the driver should not move.

## Lubricant specification

Please clean and maintain the bearings on a 3 month basis. Use only special grease or Teflon spray. This is the only way to ensure that the bearings run and remain water resistant and will not rust. Wipe off excess grease with a soft, lint-free cloth. Other parts may not be treated with a lubricant.

## Brake System

The hydraulic disc brake ensure a safe and uniform braking behavior and uniform brake pad wear. Brake pads should checked all 3 month and be replaced with new ones, if frictional material thickness is reduced to 1 mm or if brake pads on the same axle do not wear at the same rate. Should the closed oil system however start leaking or lose its pressure point on the brake, then it is necessary to maintain the system. The brake system is not intended for customer servicing. For this purpose, please send the system to isel.

## Maintenance instructions

We recommend that the Euro Scooter should be inspected at least once a year by an isel professional. In case of failures, malfunctions or defaults of the scooter, immediately contact the isel Customer service or bring the scooter to a isel service point. The replacement, repair of damaged or broken parts that concern the frame, fork, lights, brakes or drive must always be performed by isel professionals. even if you want to replace parts by your self , you are responsible for any damages or injuries caused by incorrectly fitted parts. Only original isel parts must be used as spare parts!

## Disposal of the scooter

If you wish to dispose the scooter, contact a isel dealer or contact local disposal companies for the disposal regulations of your area.

## Transfer and sale to a new owner

If you transfer your Euro Scooter a new owner, it is important that you provide all the necessary technical documentation or information to the new owner.

## Warranty

This warranty covers all defects of the EuroScooter that are shown to be caused by material or production defects. For the Euro Scooter, we offer a 5 year warranty on the frame and the front fork against breaking whilst being used correctly. For the powder coating, accessories and spare parts is a 2 years guaranteed only to the extent of defects in material error or faulty execution are attributed.

## Warning!

Non-compliance of the instruction manual as well as servicing not being carried out in the proper manner as prescribed by the instructions manual, technical modifications and additional fittings without approval of isel all will result in expiration of both the warranty and the product liability in general.

# PROGRAM OF THE *isel*-GROUP

development, production and sales of components and systems  
in the sectors  
mechanics, electronics, software, systems, display and lifestyle.

## Technical specification

### Motor:

- 60 Volt 1000 Watt
- max. 511 U/min
- rated current: 20A
- rated torque: 19,7 Nm

### Battery:

- 12 Volt 20Ah lead gel 5 piece

### Speed:

- 3 steps forward optional 50% speed reduction
- Level 1 max. 12 km/h
- Level 2 max. 20 km/h
- Level 3 max. 30 km/h
- 1 reverse gear max. 6 km/h

### Charge time:

- ca. 5 hours

### Range:

- depending on the load, terrain and driving style up to 45 km

### Mass:

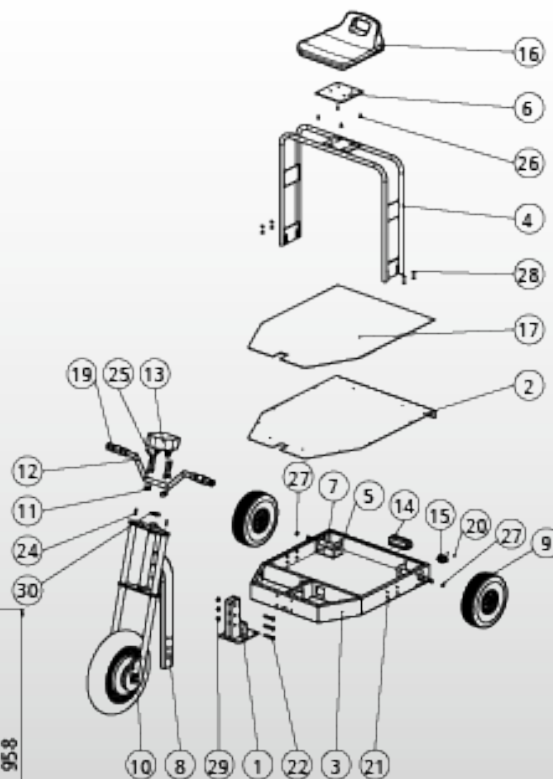
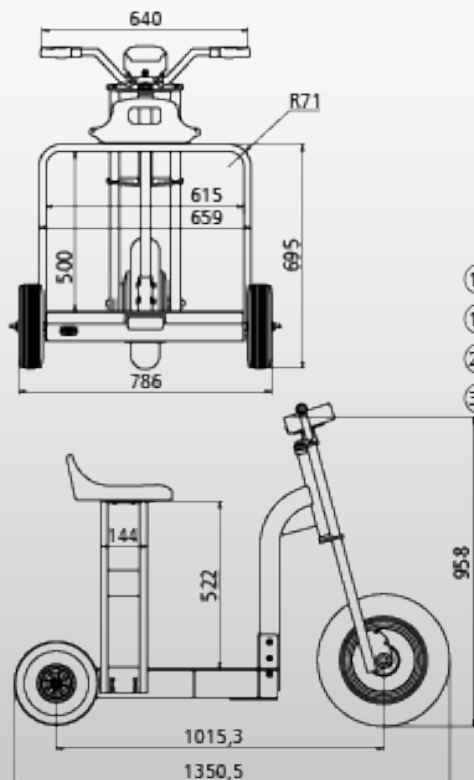
- 95 kg tare weight
- max. 250 kg gross vehicle weight

### Dimensions:

- length max. 1350 mm
- width max. 786 mm
- height max. 958 mm
- center distance 1015 mm

### Delivered condition:

- Delivery in kit form on Euro-pallet 1200 x 800 mm
- Prewired and functionality tested
- Wheels, seat frame and front fork must be mounted
- The battery is not fully charged when delivered and must be recharged by arrangement



Pos-Nr.	Artikelnummer	Menge
1	608052 8447	1
2	608052 8448	1
3	608052 8452	1
4	608052 8453	1
5	608052 8454	2
6	608052 8455	1
7	608052 8456	2
8	608052 9151	1
9	440700 0003	2
10	440701 0001	1
11	440701 0006	4
12	440701 0005	1
13	440700 0004	1
14	440701 0003	1
15	562028 1000	1
16	443107	1
17	616604	1
18	440701 0002	1
19	440701 0004	1
20	891191 0061	2
21	891124 0141	8
22	891126 0501	3
24	891594 0255	2
25	891594 0455	4
26	891134 0161	4
27	894020 0150	2
28	892095 0001	8
29	892157 0001	3
30	89225F 0011	1

\*Technical specifications subject to change