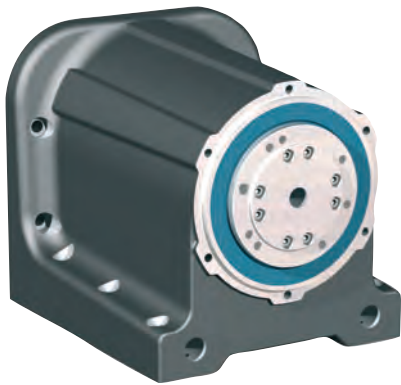


Indexing table / Rotary unit

RDH-S



RDH-S as indexing table
(solid shaft design)

RDH-S as rotary unit
(hollow shaft design)



Features

- With precision transmission
 - High load capacity, rigid drive bearing
 - Absence of play and high torsional rigidity
- Reduction 1:51 or 1:101
- Stepper or servomotor
- Protection class IP 65
- Stainless design
- Transfer accuracy < 1.5 minute of arc
- Repeatability < ± 6 seconds of arc
- Available in solid or hollow shaft design
- No maintenance

For pin assignment see page C122
For transport loads, see page C123

Ordering key

2 6 6 1 X X 0 X 0 0

Flanged shaft

0 = solid shaft
1 = hollow shaft

Transmission reduction

0 = 101
1 = 51

Motors

0 = Stepper motor MS 045 HT with encoder (400 imp., 3-channel, RS422)
2 = brushless DC servomotor RE 40
3 = brushless EC servomotor EC 42
5 = Stepper motor without encoder

Accessories



Chuck assembly

3-jaw chuck \varnothing 65

Part no.: **269060 3065***

3-jaw chuck \varnothing 80

Part no.: **269060 2080***

3-jaw chuck \varnothing 100

Part no.: **269060 2100***



Chuck jaws

4-jaw chuck \varnothing 100

Part no.: **269061 2100***

* including flange



Tailstock unit RE S

for RDH-S

Part no.: **269100 1020** (200 mm)

Part no.: **269100 1030** (300 mm)

Part no.: **269100 1040** (400 mm)

Part no.: **269100 1050** (500 mm)

